



LEANTEC ROBOT EMPOWER CNC APPLICATION



LEANTEC
INTELLIGENCE

LEANTEC ROBOT EMPOWER CNC APPLICATION



LEANTEC
INTELLIGENCE



CONTENT

Company profile / 01- 02

Robot introduction / 03- 36

Trolley robots / 37- 40

Robot applications / 41- 46

Robot controller / 47

Cloud products / 49

ABOUT LEANTEC

25+

25-year Experience

1

All in 1 Service

50+

50+ Service Locations

NO.1

PCbaseNo.1

Syntec' 25-year experience in the motion control R&D and service PCbase No.1

Integrated automation system one-stop service

Provide automation products & overall on-line industrial solutions, including both software and hardware

50+ Global service stations

Taiwan team independent research and development with the leading strength and cooperation with multi-brands

Complete ecosystem to ensure rapid integration

Leantec Intelligence Co., Ltd. (hereinafter referred to as "**Leantec Intelligence**") was established in 2013 and funded by Syntec Group. **Leantec Intelligence** has always been committed to providing manufacturing enterprises with integrated solutions for smart manufacturing based on the Syntec control technology. The core businesses include industrial robots, cloud products (to serve smart clouds and produce smart clouds), automation system integration, various electromechanical modules and smart manufacturing supporting accessories (e.g. smart edge, smart gripper and so on). Furthermore, it aims to help companies improve their production efficiency and product quality and promote industrial upgrading.

Founded in 1995, Syntec Group has long been engaged in the research, development and manufacturing of software and hardware technology for controllers in the field of machine tools and automation tools. It is among the most influential controller brands in the Asia-Pacific market.

Leantec Intelligence, a practitioner of the intelligent manufacturing of the Syntec Group, has attracted professionals from the Syntec Group and intelligent manufacturing-related industries and is committed to providing customers with complete and professional solutions based on our understanding and accumulated knowledges in the machine tool industry and intelligent manufacturing field. Meanwhile, we aim to help enterprises achieve informatization, automation and intelligence, improve their efficiency and gain more market competition.

Our visions: Most trustworthy electronic control partner

Our missions: Complete intelligent factory solution



ROBOT INTRODUCTION

Industrial Robot Serial Products

LEANTEC ROBOT

EMPOWER CNC APPLICATION



LEANTEC
LEANTEC INTELLIGENCE

LEANTEC

LEANTEC INTELLIGENCE



Robot Products Overview

Y Series



High-precision, high-speed, lightweight, compact and small footprint design, suitable for occasions with high-precision requirements and small movement space, such as handling, palletizing, assembly, 3C and other industries.

Type Y	Payload(kg)	Reach(mm)	Pos.rep(mm)			Mounting	Protection	Axes	Remark
			J1/J2(mm)	J3(mm)	J4(°)				
LS400-3	3	400	±0.01	±0.01	±0.01	Floor	IP20	4	Optional standard or no electrical cabinet
LS600-6	6	600	±0.02	±0.01	±0.01	Floor	IP20	4	Optional standard or no electrical cabinet
LS900-10	10	900	±0.02	±0.01	±0.01	Floor	IP20	4	Optional standard or no electrical cabinet
LA917-6	6	917		±0.03		Floor, Upside-down, Angle	IP54	6	Optional standard or no electrical cabinet

R Series



High-precision, high-speed, compact and small footprint design. With high IP rating, the robot is protected against cutting fluid and can be installed inside a machine. It is recommended for high-precision tool grinder, load and unload applications.

Type R	Payload(kg)	Reach(mm)	Pos.rep(mm)	Mounting	Protection	Axes	Remark
LA596-4	4	596	±0.02	Floor, Upside-down, Angle	IP67	6	Optional standard, hollow or no electric cabinet.
LA707-7	7	707	±0.02	Floor, Upside-down, Angle	IP67	6	Optional standard, hollow or no electric cabinet.
LA906-7	7	906	±0.03	Floor, Upside-down, Angle	IP54 / IP67	6	Optional standard, hollow or no electric cabinet.
LA1206-10	10	1206	±0.05	Floor, Upside-down, Angle	IP54	6	Optional standard or no electric cabinet.

C Series



High payload capacity and long reach. It is well suited for loading and unloading lathe/milling machines. With the additional application packages, it can meet the requirements of stamping, palletizing, polishing, welding, and cutting industries.

Type C	Payload(kg)	Reach(mm)	Pos.rep(mm)	Mounting	Protection	Axes	Remark
LA1468-10	10	1468	±0.08	Floor, Upside-down, Angle	IP54	6	Standard
LA1598-10	10	1598	±0.08	Floor, Upside-down, Angle	IP54	6	Standard
LA1717-20	20	1717	±0.08	Floor, Upside-down, Angle	IP54	6	Standard
LA2000-8	8	2000	±0.08	Floor, Upside-down, Angle	IP54	6	Standard
LA2100-60	60	2100	±0.2	Floor	IP54	6	Standard

K Series



High-speed, High-precision, and high protection. Provide a variety of installation methods suitable for complex applications with high-precision requirements such as handling, grinding, loading and unloading, welding and other industries.

Type K	Payload(kg)	Reach(mm)	Pos.rep(mm)	Mounting	Protection	Axes	Remark
LA1460-13	13	1460	±0.03	Floor, Upside-down	IP67	6	Standard
LA1725-20	20	1725	±0.04	Floor, Upside-down	4/5/6 axis IP67, 1/2/3 axis IP65.	6	Standard

Flexible Robot Cell Products Overview

Double-layer trolley robot series



It could be applied for medium/small type or angle location features of machine product. The material storehouse adopts double-layers automation material tray solution, which is simple operation, strong applicability and high integrity. It could select the end actuator to work with. The material storehouse protection fence component ensures the safety for employee.

Type	Coordinate robot type	Robot max load(kg)	Robot work radius(mm)	Product size(mm)	Single tray size(mm)	Tray max load(kg)	Suitable workpiece type	Suitable workpiece size(mm)	End effector
LXC100-917Y	LA917-6	6	917	1700 × 600	570 × 420	80	Medium/small type, angle location demand	Within 95	Optional
LXC100-1206R	LA1206-10	10	1206	1700 × 600	570 × 420	80	Medium/small type, angle location demand	Within 95	Optional
LXC11P-1468C	LA1468-10	10	1468	2400 × 850	800 × 600	80	Medium/small type, angle location demand	Within 135	Optional
LXC11P-1717C	LA1717-10	20	1717	2400 × 850	800 × 600	80	Medium/small type, angle location demand	Within 135	Optional

Rotation trolley robot series



It could be suitable for the ring, disc, pie machined product. The material storehouse adopts rotation jack-up structure with simple operation, high integrity and suitable for the large piece product. It adopts openable three-faces surrounded fence component to protect the refuel safety for employees and could work with the optional end effector.

Type	Coordinate robot type	Robot max load(kg)	Robot work radius(mm)	Product size(mm)	Material storehouse station amount	Single station load(kg)	Suitable workpiece type	Single station height(mm)	Suitable workpiece size file outer circle(mm)
LXC200-917Y	LA917-6	6	917	2000 × 700	8	50	Plate, circle, pie.	410	φ25-φ160
LXC200-1206R	LA1206-10	10	1206	2000 × 700	8	50	Plate, circle, pie.	410	φ25-φ160

Y Series 4-axis 3KG

LS400-3



PRODUCT FEATURES

- High-speed and high-precision with $\pm 0.02\text{mm}$ position repeatability
- Small size, lightweight, suitable for light and small loads, small workspace
- Equipped with 16I/24O and is easily expandable for more complex applications
- Equipped 8 I/O bus connections and 2 pneumatic connections inside for easy cable management

MAIN APPLICATIONS

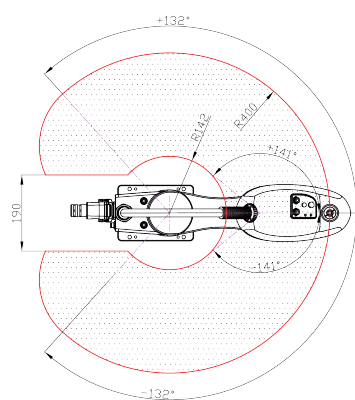
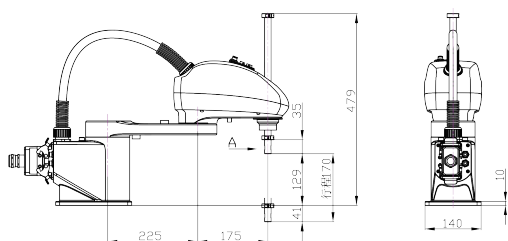
Handling

Assembling

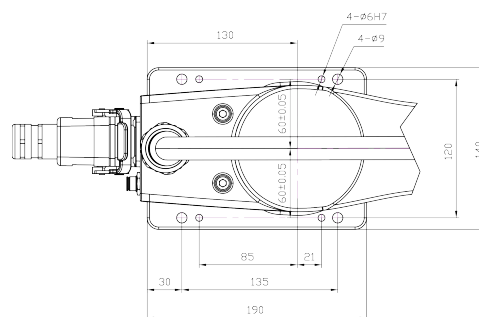
Palletizing

Others

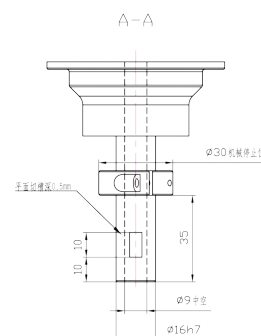
Robot Work Envelop



Robot Base Dimension



Robot Flange Dimension



PRODUCT PARAMETERS

No. Control Axes			4
Max Load Capacity			3
Max. Reach (mm)			400
Pos.rep	J1Axis/ J2Axis	(mm)	±0.01
	J3 Axis	(mm)	±0.01
	J4 Axis	(°)	±0.01
Motion Range (°)	J1 Axis	(°)	± 132
	J2 Axis	(°)	± 141
	J3 Axis	(mm)	0/-170
	J4 Axis	(°)	± 360
Max. Speed* (° /s)	J1 Axis	(°/s)	720
	J2 Axis	(°/s)	720
	J3 Axis	(mm/s)	1100
	J4 Axis	(°/s)	2500

Motor Output (kw)	J1 Axis	0.4
	J2 Axis	0.1
	J3 Axis	0.1
	J4 Axis	0.1
Weight (kg)		≈ 13
Installation		Floor
Levels of protection		IP20
Ambient temperature / Humidity / Vibration		Ambient temperature: 0~45°C Ambient humidity: Normally 75 %RH or less (No dew, nor frost allow) Short term 90 %RH or less (within one month) Vibration acceleration: 4.9 m/s (0.5G) or less
Electronic Control Box Specification	Power Supply	Single Phase 200-230VAC, 50Hz/60Hz
	Size	380mmX510mmX305mm

Y Series 4-axis 6KG

LS600-6



PRODUCT FEATURES

- High-speed and high-precision with $\pm 0.03\text{mm}$ position repeatability
- Small size, lightweight, suitable for light and small loads, small workspace
- Equipped with 16/24 I/O and support Quick c charge of IO board, suitable for more compact and complex application
- Equipped 8 I/O bus connections and 2 pneumatic connections inside for easy cable management
- Standard option with IP54 high protection performance, suitable for complex working environment

MAIN APPLICATIONS

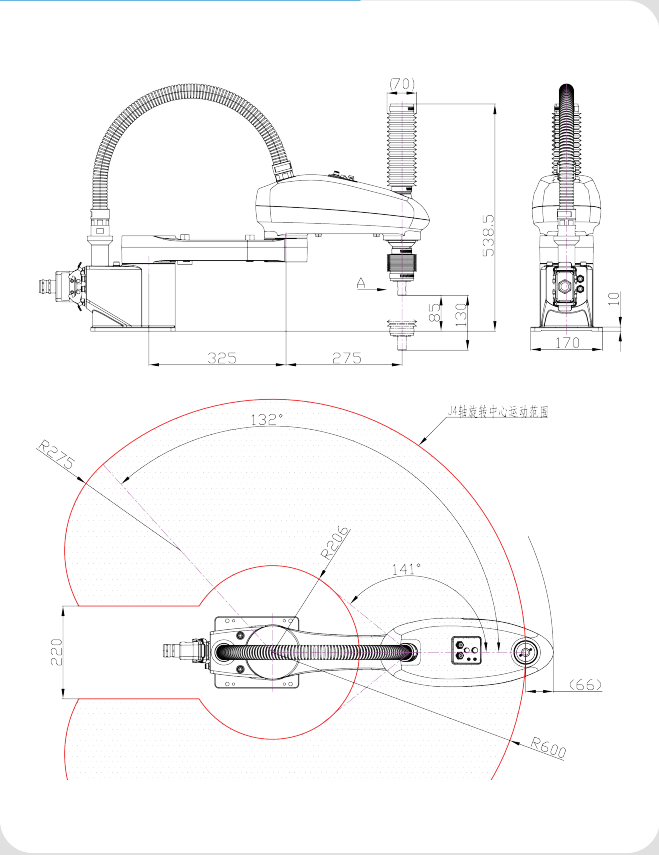
Handling

Assembling

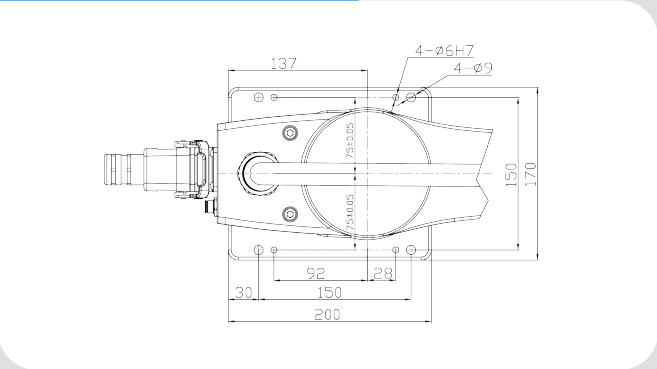
Palletizing

Others

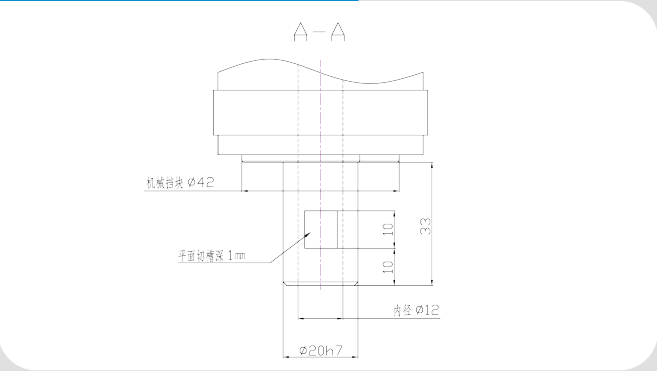
Robot Work Envelop



Robot Base Dimension



Robot Flange Dimension



PRODUCT PARAMETERS

No. Control Axes			4
Max Load Capacity			6
Max. Reach (mm)			600
Pos.rep	J1Axis/ J2Axis	(mm)	±0.02
	J3 Axis	(mm)	±0.01
	J4 Axis	(°)	±0.01
Motion Range (°)	J1 Axis	(°)	±132
	J2 Axis	(°)	±141
	J3 Axis	(mm)	0/-130
	J4 Axis	(°)	±360
Max. Speed* (° /s)	J1 Axis	(°/s)	450
	J2 Axis	(°/s)	720
	J3 Axis	(mm/s)	1100
	J4 Axis	(°/s)	2000

Motor Output (kw)	J1 Axis	0.4
	J2 Axis	0.2
	J3 Axis	0.1
	J4 Axis	0.1
Weight (kg)		≈ 17
Installation		Floor
Levels of protection		IP20
Ambient temperature / Humidity / Vibration		Ambient temperature:0~45°C Ambient humidity: Normally 75 %RH or less (No dew, nor frost allow) Short term 90 %RH or less (within one month) Vibration acceleration: 4.9 m/s (0.5G) or less
Electronic Control Box Specification	Power Supply	Single Phase 200-230VAC, 50Hz/60Hz
	Size	380mmX510mmX305mm

Y Series 4-axis 10KG

LS900-10



PRODUCT FEATURES

- High-speed and high-precision with $\pm 0.03\text{mm}$ position repeatability
- Small size, lightweight, suitable for light and small loads, small workspace
- Equipped with 16I/24O and support Quick change of IO board, suitable for more precise and complex applications
- Equipped 8 I/O bus connections and 2 pneumatic connections inside for easier cable management

MAIN APPLICATIONS

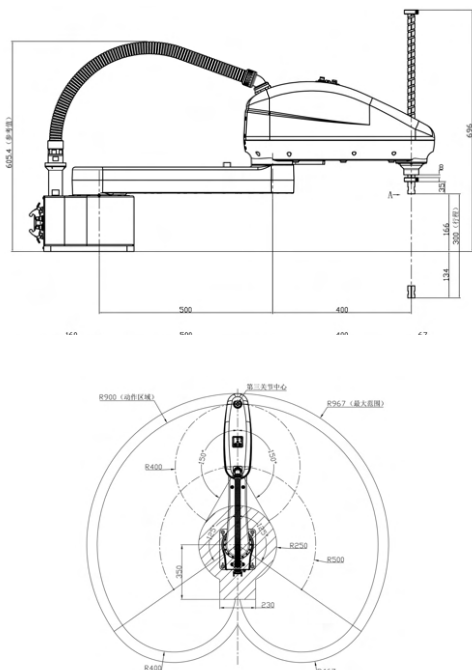
Handling

Assembling

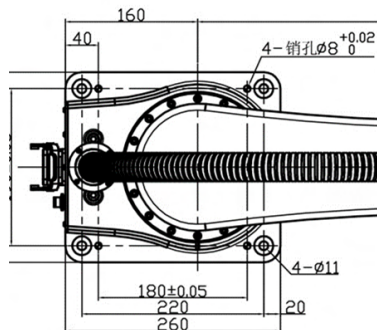
Palletizing

Others

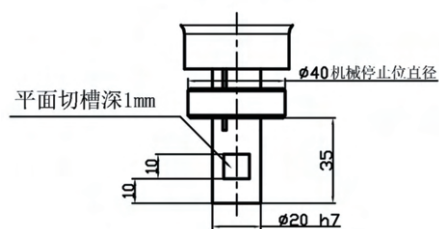
Robot Work Envelop



Robot Base Dimension



Robot Flange Dimension



PRODUCT PARAMETERS

No. Control Axes			4
Max Load Capacity			10
Max. Reach (mm)			900
Pos.rep	J1Axis/ J2Axis	(mm)	±0.02
	J3 Axis	(mm)	±0.01
	J4 Axis	(°)	±0.01
Motion Range (°)	J1 Axis	(°)	±125
	J2 Axis	(°)	±150
	J3 Axis	(mm)	0/-300
	J4 Axis	(°)	±360
Max. Speed* (°/s)	J1 Axis	(°/s)	300
	J2 Axis	(°/s)	375
	J3 Axis	(mm/s)	1041
	J4 Axis	(°/s)	1500

Motor Output (kw)	J1 Axis	0.75
	J2 Axis	0.4
	J3 Axis	0.2
	J4 Axis	0.2
Weight (kg)		≈41
Installation		Floor
Levels of protection		IP20
Ambient temperature / Humidity / Vibration		Ambient temperature:0~45°C Ambient humidity: Normally 75 %RH or less (No dew, nor frost allow) Short term 90 %RH or less (within one month) Vibration acceleration: 4.9 m/s (0.5G) or less
Electronic Control Box Specification	Power Supply	Single Phase 200-230VAC, 50Hz/60Hz
	Size	380mmX510mmX305mm

Y Series 6-axis 6KG

LA917-6



PRODUCT FEATURES

- High-speed and high-precision with $\pm 0.03\text{mm}$ position repeatability
- Small size, lightweight, suitable for light and small loads, small exercise space
- Equipped with 16/24 I/O and is easily expandable for more complex applications
- Equipped with a pipeline package, 1 built-in straight quick pneumatic connection, 8 built-in I/O bus connections, for easy cable management
- Optional built-in 2 (3) sets of solenoid valves, limited to easy cable management

MAIN APPLICATIONS

Loading/unloading

Handling

Grinding

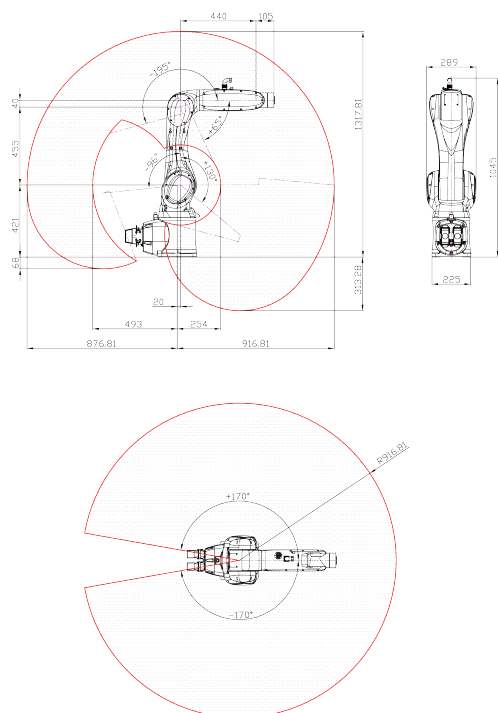
Assembling

Palletizing

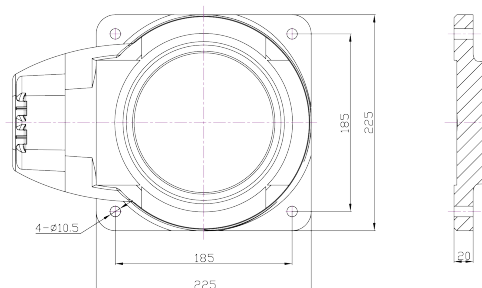
Others



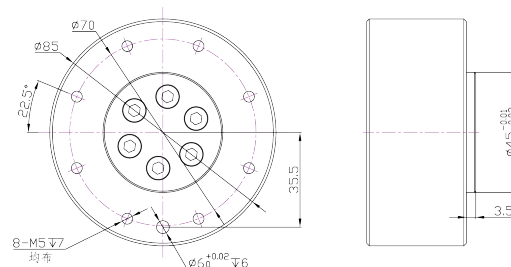
Robot Work Envelop



Robot Base Dimension



Robot Flange Dimension



PRODUCT PARAMETERS

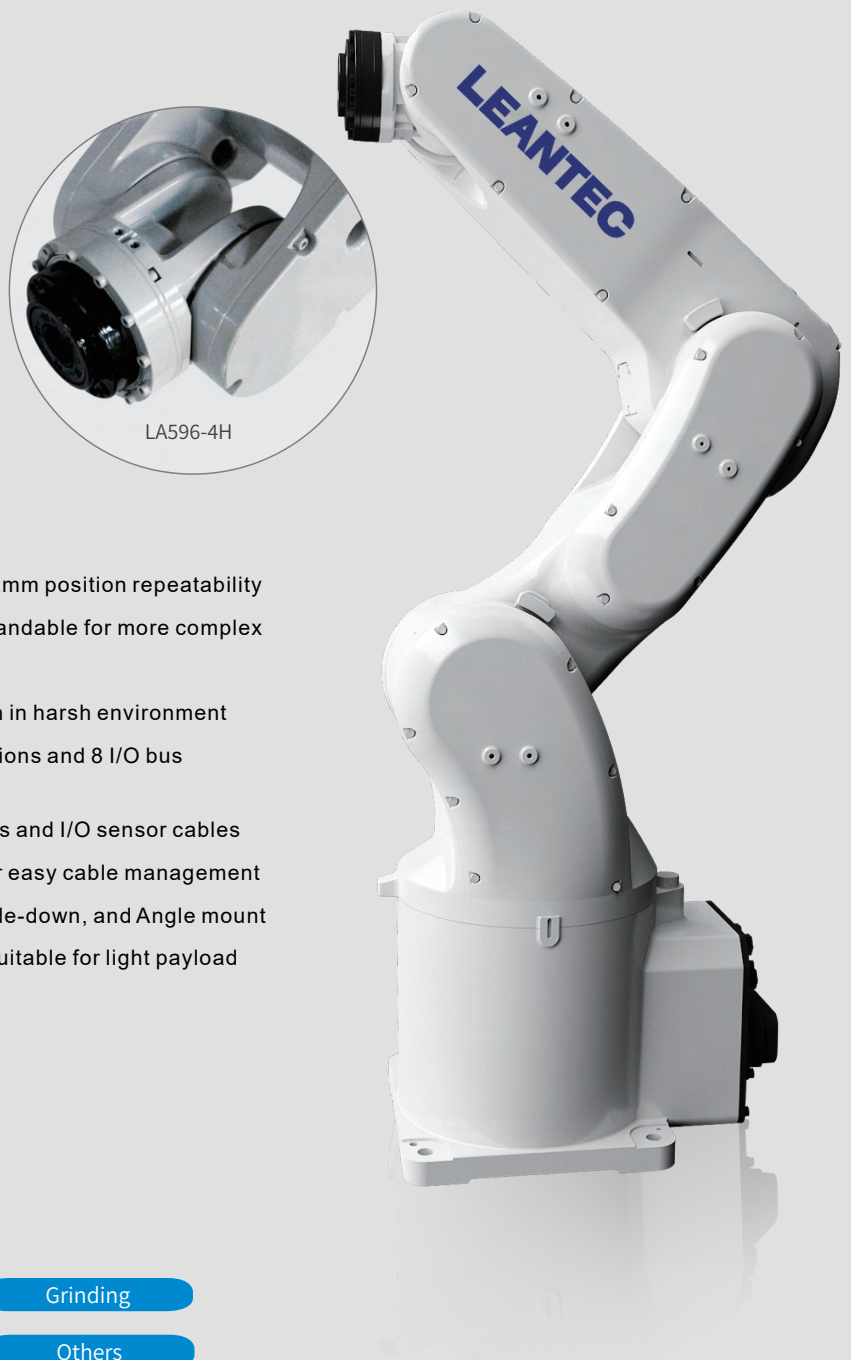
No. Control Axes		6
Payload (kg)		6
Max. Reach (mm)		917
Pos.rep(mm)		±0.03
Motion Range (°)	J1 Axis	±170
	J2 Axis	+130/-96
	J3 Axis	+65/-195
	J4 Axis	±170
	J5 Axis	±120
	J6 Axis	±360
Max. Speed* (° /s)	J1 Axis	337.5
	J2 Axis	270
	J3 Axis	375
	J4 Axis	300
	J5 Axis	375
	J6 Axis	468

Motor Output (kw)	J1 Axis	0.75
	J2 Axis	0.75
	J3 Axis	0.4
	J4 Axis	0.1
	J5 Axis	0.1
	J6 Axis	0.1
Weight (kg)		≈60
Installation		Floor, Upside-down, Angle
Levels of protection		IP54
Ambient temperature / Humidity / Vibration		Ambient temperature: 0~45℃ Ambient humidity: Normally 75 %RH or less (No dew. nor frost allow) Short term 90 %RH or less (within one month) Vibration acceleration: 4.9 m/s (0.5G) or less
Electronic Control Box Specification	Power Supply	Single Phase 200-230VAC, 50Hz/60Hz
	Size	380mmX510mmX305mm

R Series 4KG

LA596-4

LA596-4H Hollow Wrist Type



PRODUCT FEATURES

- High-speed and high-precision with $\pm 0.02\text{mm}$ position repeatability
- Equipped with 16/24 I/O and is easily expandable for more complex applications
- Standard IP67 proved long term operation in harsh environment
- Equipped with 4 quick pneumatic connections and 8 I/O bus connections
- Wrist Model allows pneumatic connections and I/O sensor cables be installed from the base of the flange for easy cable management
- Provide 3 mounting methods: Floor, Upside-down, and Angle mount
- Compact and small footprint design. It's suitable for light payload operations and narrow workspace

MAIN APPLICATIONS

Handling

Loading/Unloading

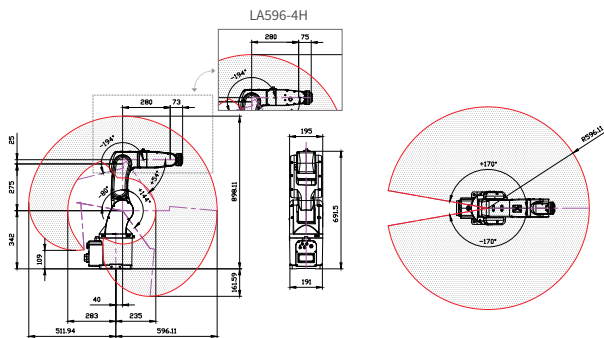
Grinding

Assembling

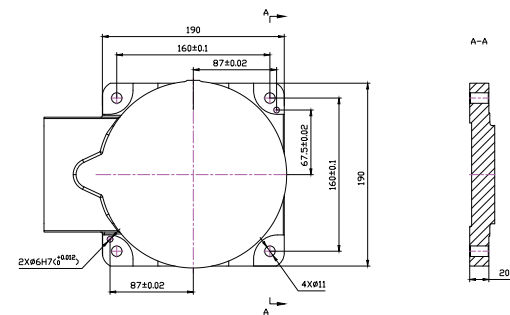
Palletizing

Others

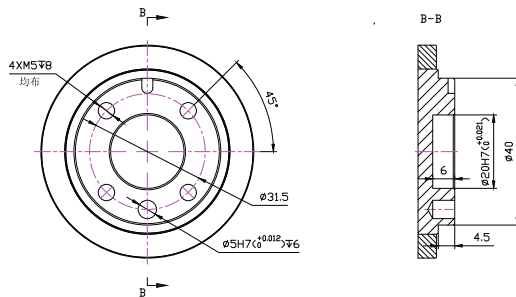
Robot Work Envelope



Robot Base Dimension

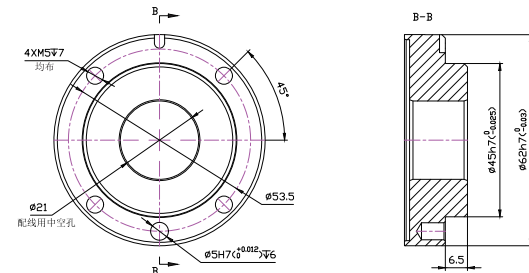


Robot Flange Dimension



LA596-4

Robot Flange Dimension



LA596-4H Hollow wrist type

PRODUCT PARAMETERS

No. Control Axes		6
Payload (kg)		4
Max. Reach (mm)		596
Pos.rep(mm)		±0.02
Motion Range (°)	J1 Axis	±170
	J2 Axis	+144/-80
	J3 Axis	+54/-194
	J4 Axis	±170
	J5 Axis	±119
	J6 Axis	±360
Max. Speed* (°/s)	J1 Axis	440
	J2 Axis	355
	J3 Axis	440
	J4 Axis	490
	J5 Axis	450
	J6 Axis	720/948(H)

Motor Output (kw)	J1 Axis	0.4
	J2 Axis	0.4
	J3 Axis	0.2
	J4 Axis	0.1
	J5 Axis	0.05
	J6 Axis	0.1
Weight (kg)		≈32
Installation		Floor, Upside-down, Angle.
Levels of protection		IP67
Ambient temperature / Humidity / Vibration		Ambient temperature: 0~45°C Ambient humidity: Normally 20-80 %RH or less (No dew, nor frost allow) Short term 90 %RH or less (within one month) Vibration acceleration: 4.9 m/s (0.5G) or less
Electronic Control Box Specification	Power Supply	Single Phase 200-230VAC, 50Hz/60Hz
	Size	480mm x 500mm x 280mm

R Series 7KG

LA707-7

LA707-7H Hollow Wrist Type



LA707-7H

PRODUCT FEATURES

- High-speed and high-precision with $\pm 0.02\text{mm}$ position repeatability
- Equipped with 16/24 I/O and is easily expandable for more complex applications
- Standard IP67 proved long term operation in harsh environment
- Equipped with 4 quick pneumatic connections and 8 I/O bus connections
- Hollow wrist type is selectable. It could let air pipeline and IO sensor wire internally routing from base to wrist frange, which could effectively enhance the gripper design wire winding
- Provide 3 mounting methods: Floor, Upside-down, and Angle mount
- Compact and small footprint design. It's suitable for light payload operations and narrow workspace

MAIN APPLICATIONS

Loading/unloading

Handling

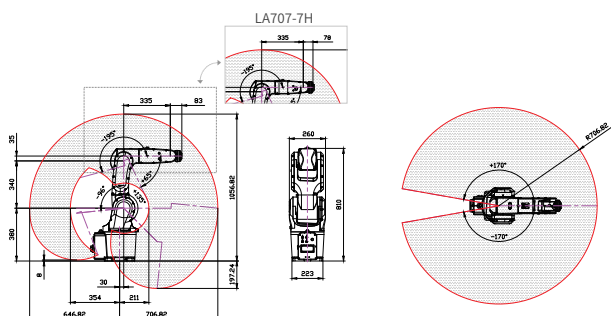
Assembling

Palletizing

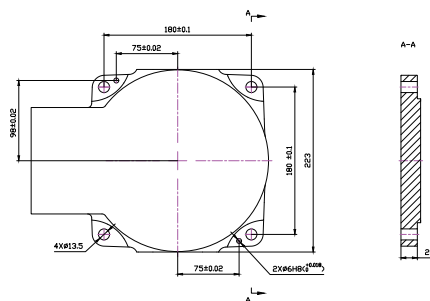
Others



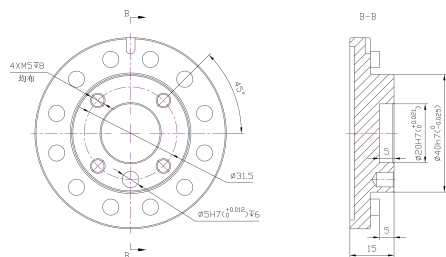
Robot Work Envelope



Robot Base Dimension

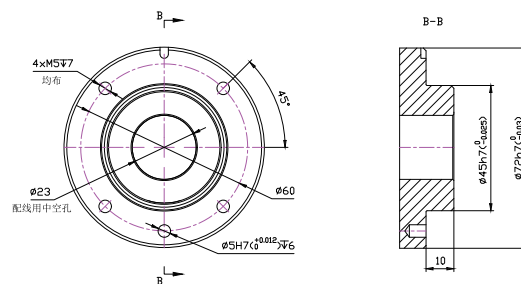


Robot Flange Dimension



LA707-7

Robot Flange Dimension



LA707-7H Hollow wrist type

PRODUCT PARAMETERS

No. Control Axes		6
Max Load Capacity		7
Max. Reach (mm)		707
Pos.rep(mm)		±0.02
Motion Range (°)	J1 Axis	±170
	J2 Axis	+135/-96
	J3 Axis	+65/-195
	J4 Axis	±170
	J5 Axis	±120
	J6 Axis	±360
Max. Speed* (°/s)	J1 Axis	440
	J2 Axis	355
	J3 Axis	440
	J4 Axis	480
	J5 Axis	450
	J6 Axis	705/900(H)

Motor Output (kw)	J1 Axis	0.75
	J2 Axis	0.75
	J3 Axis	0.4
	J4 Axis	0.2
	J5 Axis	0.1
	J6 Axis	0.1
Weight (kg)		≈50
Installation		Floor, Upside-down, Angle.
Levels of protection		IP67
Ambient temperature / Humidity / Vibration		Ambient temperature: 0~45.°C Ambient humidity: Normally 20-80%RH or less (No dew. nor frost allow) Short term 90 %RH or less (within one month) Vibration acceleration: 4.9 m/s (0.5G) or less
Electronic Control Box Specification	Power Supply	Single Phase 200-230VAC 50Hz/60Hz
	Size	480mm x 500mm x 280mm

R Series 7KG(Long arm type)

LA906-7

LA906-7H Hollow Wrist Type



PRODUCT FEATURES

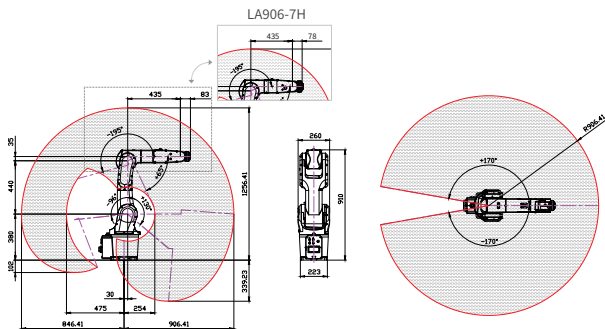
- Wider range of motion. The workspace is increased by 200mm from the standard mode
- High-speed and high-precision with $\pm 0.03\text{mm}$ position repeatability
- Equipped with 16/24 I/O and is easily expandable for more complex applications
- Equipped with 16/24 I/O and is easily expandable for more complex applications
- Equipped with 4 quick pneumatic connections and 8 I/O bus connections
- Hollow wrist model allows air hoses and I/O sensor cables be installed from the base of the flange for easy cable management
- Provide 3 mounting methods: Floor, Upside-down, and Angle mount
- Compact and small footprint design. It's suitable for light payload operations and narrow workspace.

MAIN APPLICATIONS

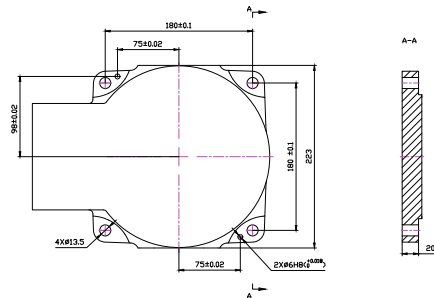
- | | | |
|-------------------|-------------|----------|
| Loading/unloading | Handling | Grinding |
| Assembling | Palletizing | Others |



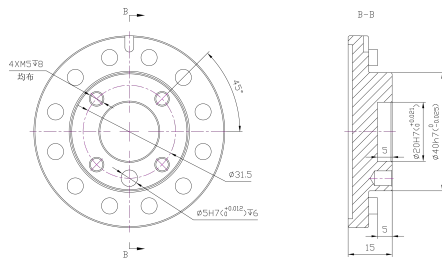
Robot Work Envelope



Robot Base Dimension

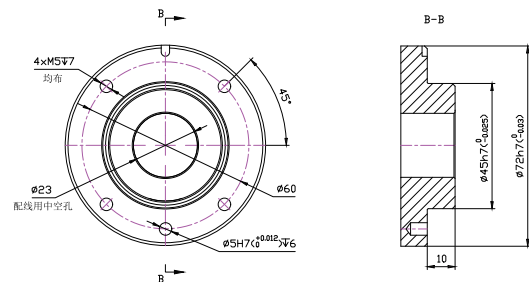


Robot Flange Dimension



LA906-7

Robot Flange Dimension



LA906-7H Hollow Wrist Type

PRODUCT PARAMETERS

No. Control Axes		6
Max Load Capacity		7
Max. Reach (mm)		906
Pos.rep(mm)		±0.03
Motion Range (°)	J1 Axis	±170
	J2 Axis	+130/-96
	J3 Axis	+65/-195
	J4 Axis	±170
	J5 Axis	±120
	J6 Axis	±360
Max. Speed* (°/s)	J1 Axis	355
	J2 Axis	355
	J3 Axis	355
	J4 Axis	480
	J5 Axis	450
	J6 Axis	705/900(H)

Motor Output (kw)	J1 Axis	0.75
	J2 Axis	0.75
	J3 Axis	0.4
	J4 Axis	0.2
	J5 Axis	0.1
	J6 Axis	0.1
Weight (kg)		≈52
Installation		Floor, Upside-down, Angle
Levels of protection		Standard option IP54, optional IP67
Ambient temperature / Humidity / Vibration		Ambient temperature: 0~45°C Ambient humidity: Normally 20-80 %RH or less (No dew, nor frost allow) Short term 90 %RH or less (within one month) Vibration acceleration: 4.9 m/s (0.5G) or less
Electronic Control Box Specification	Power Supply	Single Phase 200-230VAC 50Hz/60Hz
	Size	480mm x 500mm x 280mm

R Series 10KG

LA1206-10

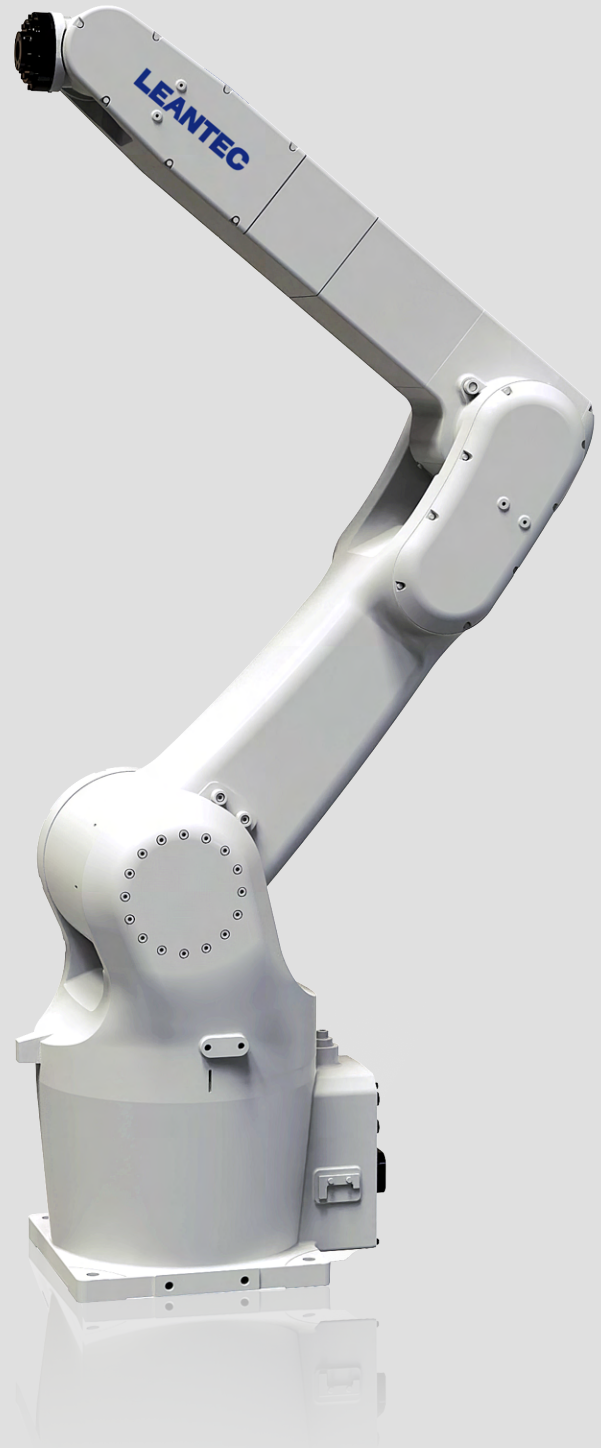


PRODUCT FEATURES

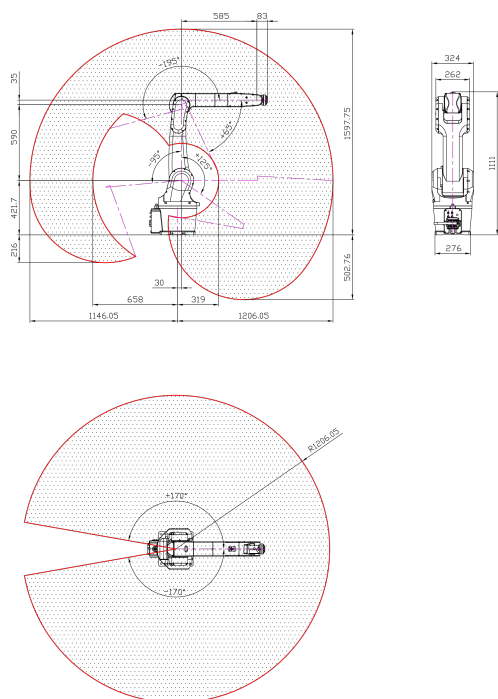
- Wider range of motion, high-speed and high-precision with $\pm 0.05\text{mm}$ position repeatability
- Equipped with 16/24 I/O and is easily expandable for more complex applications
- Equipped with 4 quick pneumatic connections and 8 I/O bus connections
- Provide 3 mounting methods: Floor, Upside-down, and Angle mount
- Compact and small footprint design. It's suitable for light payload operations and narrow workspace

MAIN APPLICATIONS

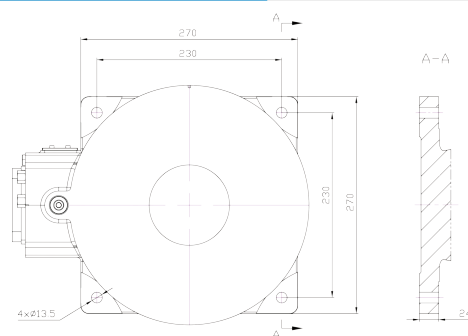
- | | | |
|-------------------|-------------|----------|
| Loading/unloading | Handling | Grinding |
| Assembling | Palletizing | Others |



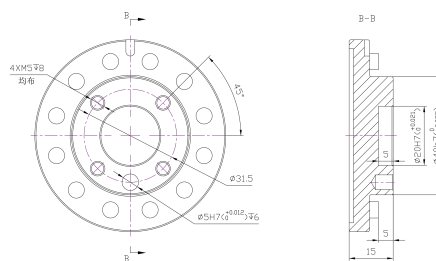
Robot Work Envelope



Robot Base Dimension



Robot Flange Dimension



PRODUCT PARAMETERS

No. Control Axes		6
Max Load Capacity		10
Max. Reach (mm)		1206
Pos.rep(mm)		±0.05
Motion Range (°)	J1 Axis	±170
	J2 Axis	+125/-95
	J3 Axis	+65/-195
	J4 Axis	±170
	J5 Axis	±120
	J6 Axis	±360
Max. Speed* (° /s)	J1 Axis	297
	J2 Axis	223
	J3 Axis	220
	J4 Axis	480
	J5 Axis	360
	J6 Axis	705

Motor Output (kw)	J1 Axis	1
	J2 Axis	1
	J3 Axis	0.4
	J4 Axis	0.2
	J5 Axis	0.1
	J6 Axis	0.1
Weight (kg)		≈ 76
Installation		Floor, Upside-down, Angle
Levels of protection		IP54
Ambient temperature / Humidity / Vibration		Ambient temperature: 0~45°C Ambient humidity: Normally 20-80%RH or less (No dew. nor frost allow) Short term 90 %RH or less (within one month) Vibration acceleration: 4.9 m/s (0.5G) or less
Electronic Control Box Specification	Power Supply	Single Phase 200-230VAC 50Hz/60Hz
	Size	480mm x 500mm x 280mm

C Series 10KG

LA1468-10



PRODUCT CHARACTERISTICS

- Suitable for light and medium payload operations in wide range of applications
- Equipped with 16/24 I/O, 2 interfaces and 1 interface is easily expandable for more complex applications
- Equipped 6 I/O bus connections inside for easier cable management
- Provide 3 mounting methods: Floor, Upside-down and Angle mount

MAIN APPLICATIONS

Loading/unloading

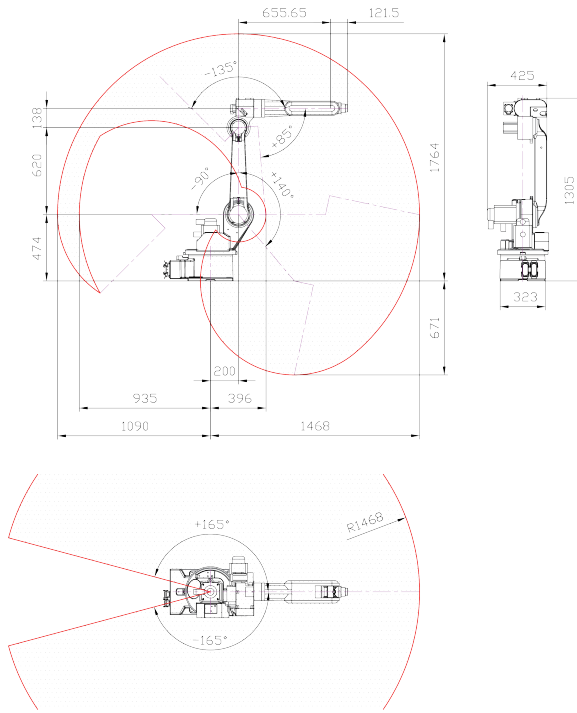
Welding

Assembling

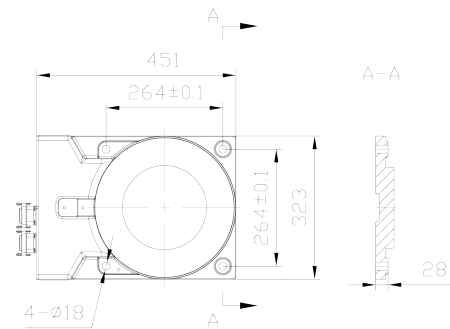
Others



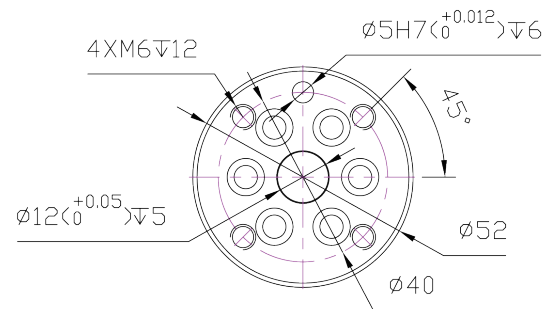
Robot Work Envelope



Robot Base Dimension



Robot Flange Dimension



PRODUCT PARAMETERS

No. Control Axes		6
Max Load Capacity		10
Max. Reach (mm)		1468
Pos.rep(mm)		±0.08
Motion Range (°)	J1 Axis	±165
	J2 Axis	+140/-90
	J3 Axis	+85/-135
	J4 Axis	±180
	J5 Axis	±129
	J6 Axis	±360
Max. Speed* (°/s)	J1 Axis	200
	J2 Axis	134
	J3 Axis	268
	J4 Axis	260
	J5 Axis	250
	J6 Axis	443

Motor Output (kw)	J1 Axis	1.5	
	J2 Axis	1.5	
	J3 Axis	0.75	
	J4 Axis	0.2	
	J5 Axis	0.2	
	J6 Axis	0.2	
Weight (kg)		≈158	
Installation		Floor, Upside-down, Angle.	
Levels of protection		IP54	
Ambient temperature / Humidity / Vibration		Ambient temperature: 0~45℃ Ambient humidity: Normally 75 %RH or less (No dew, nor frost allow) Short term 90 %RH or less (within one month) Vibration acceleration: 4.9 m/s (0.5G) or less	
Electronic Control Box Specification	Power Supply		1/3PH, 200-230VAC, 50Hz/60Hz
	Size	Standard	580mm×460mm×870mm
		Optional	480mm x 500mm x 280mm

C Series 10KG(Long arm type)

LA1598-10



PRODUCT CHARACTERISTICS

- Suitable for light load and medium load operations wide range of arm span
- Equipped with 16 I interfaces, 24 O interfaces, 2 DA interfaces and 1 AD interface to support quick c charges of IO board
- Equipped 6 I/O bus connections inside for easy cable management
- Provide 3 mounting methods: Floor, Upside-down and Angle mount and Angle mount

MAIN APPLICATIONS

Loading/unloading

Handling

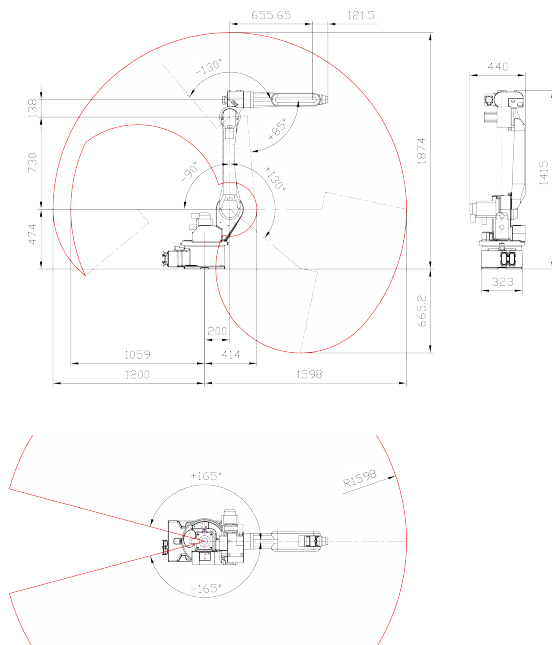
Welding

Assembling

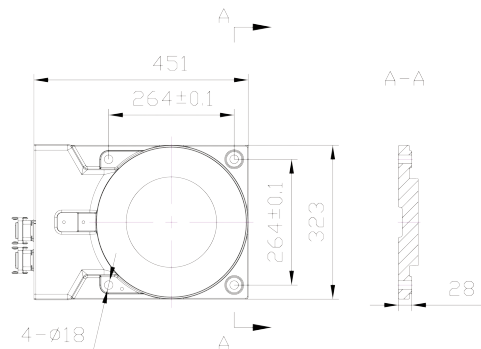
Others



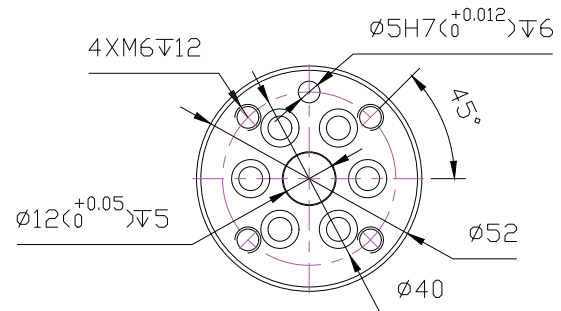
Robot Work Envelope



Robot Base Dimension



Robot Flange Dimension



PRODUCT PARAMETERS

No. Control Axes		6
Max Load Capacity		10
Max. Reach (mm)		1598
Pos.rep(mm)		±0.08
Motion Range (°)	J1 Axis	±165
	J2 Axis	+130/-90
	J3 Axis	+85/-130
	J4 Axis	±180
	J5 Axis	±129
	J6 Axis	±360
Max. Speed* (°/s)	J1 Axis	200
	J2 Axis	134
	J3 Axis	268
	J4 Axis	260
	J5 Axis	250
	J6 Axis	443

Motor Output (kw)	J1 Axis	1.5	
	J2 Axis	1.5	
	J3 Axis	0.75	
	J4 Axis	0.2	
	J5 Axis	0.2	
	J6 Axis	0.2	
Weight (kg)		≈ 195	
Installation		Floor, Upside-down, Angle.	
Levels of protection		IP54	
Ambient temperature / Humidity / Vibration		Ambient temperature: 0~45°C Ambient humidity: Normally 75 %RH or less (No dew, nor frost allow) Short term 90 %RH or less (within one month) Vibration acceleration: 4.9 m/s (0.5G) or less	
Electronic Control Box Specification	Power Supply		1/3PH, 200-230VAC, 50Hz/60Hz
	Size	Standard	580mm×460mm×870mm
		Optional	480mm x 500mm x 280mm

C Series 20KG

LA1717-20

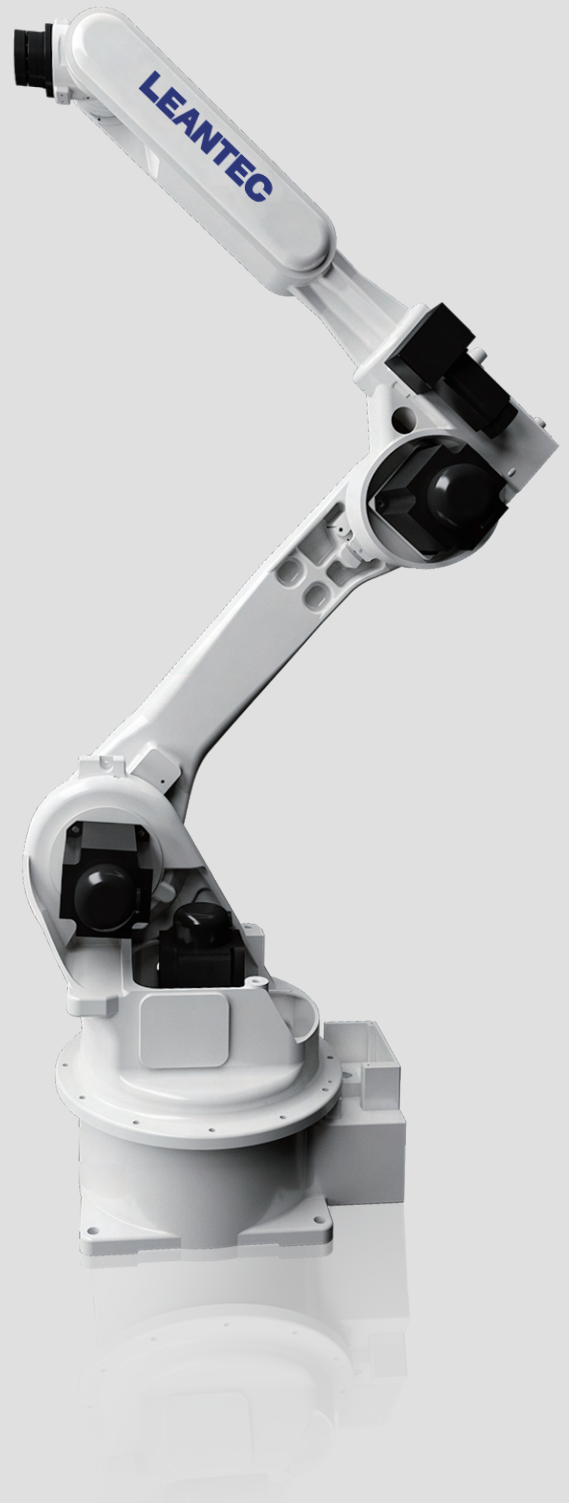


PRODUCT CHARACTERISTICS

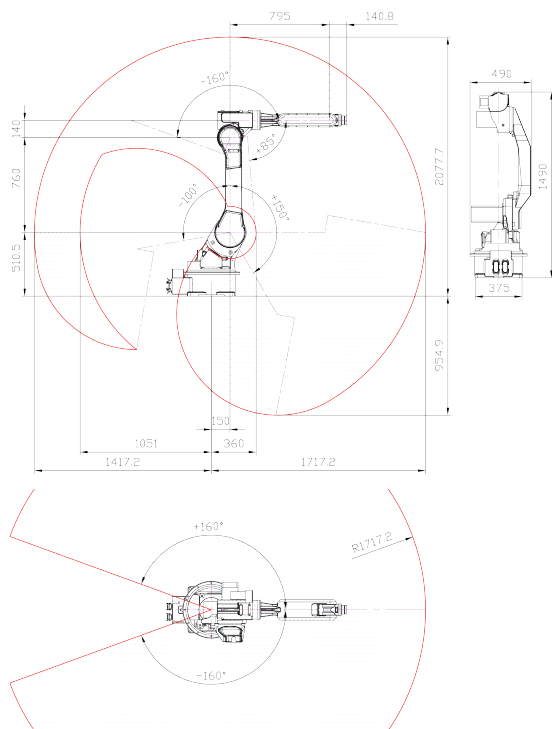
- Suitable for light load and medium load operations, wide range of arm span is suitable for a wide range of applications
- Equipped with 16 I/24 O interfaces, 2 DA interfaces and 1AD interface, supporting quick changes of IO board
- Equipped 6 I/O bus connections inside for easy cable management
- Provide 3 mounting methods: Floor, Upside-down and Angle mount

MAIN APPLICATIONS

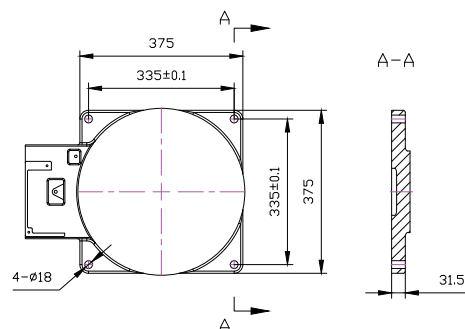
- | | | |
|-------------------|----------|---------|
| Loading/unloading | Handling | Welding |
| Assembling | Others | |



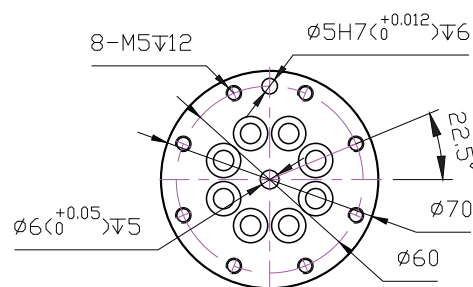
Robot workspace



Robot Base Dimension



Robot Flange Dimension



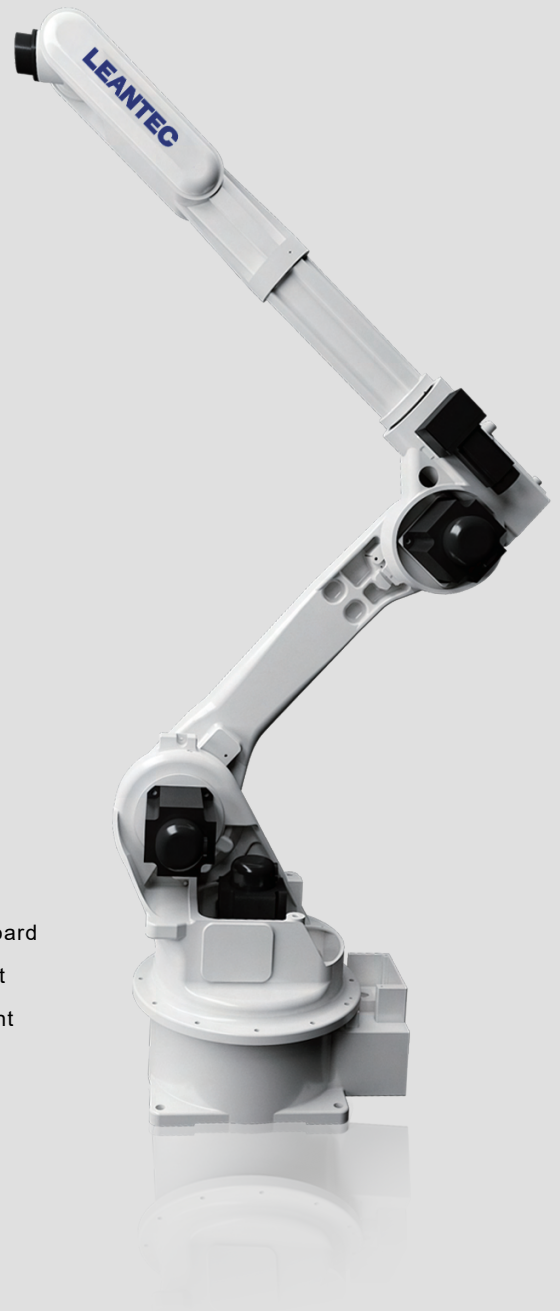
PRODUCT PARAMETERS

No. Control Axes		6
Max Load Capacity		20
Max. Reach (mm)		1717
Pos.rep(mm)		±0.08
Motion Range (°)	J1 Axis	±160
	J2 Axis	+150/-100
	J3 Axis	+85/-160
	J4 Axis	±180
	J5 Axis	±130
	J6 Axis	±360
Max. Speed* (°/s)	J1 Axis	147
	J2 Axis	101
	J3 Axis	134
	J4 Axis	200
	J5 Axis	321
	J6 Axis	319

Motor Output (kw)	J1 Axis	1.5	
	J2 Axis	2	
	J3 Axis	1.5	
	J4 Axis	0.4	
	J5 Axis	0.2	
	J6 Axis	0.2	
Weight (kg)		≈270	
Installation		Floor, Upside-down, Angle.	
Levels of protection		IP54	
Ambient temperature / Humidity / Vibration		Ambient temperature: 0~45.℃ Ambient humidity: Normally 75 %RH or less (No dew. nor frost allow) Short term 90 %RH or less (within one month) Vibration acceleration: 4.9 m/s (0.5G) or less	
Electronic Control Box Specification	Power Supply		1/3PH, 200-230VAC, 50Hz/60Hz
	Size	Standard	580mm×460mm×870mm
		Optional	480mm x 500mm x 280mm

C Series 8KG(Long arm type)

LA2000-8



PRODUCT CHARACTERISTICS

- Suitable for welding and loading/unloading light payload with extended reach design
- Equipped with 16 I interfaces, 24 O interfaces, 2 DA interfaces and 1 interface supporting quick c charges of IO board
- Equipped 6 I/O bus connections inside for easy cable management
- Provide 3 mounting methods: Floor, Upside-down, and Angle mount

MAIN APPLICATIONS

Loading/unloading

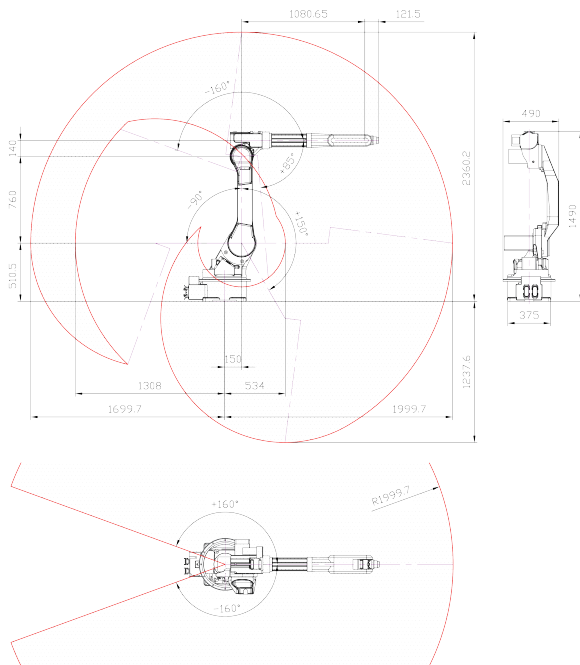
Handling

Welding

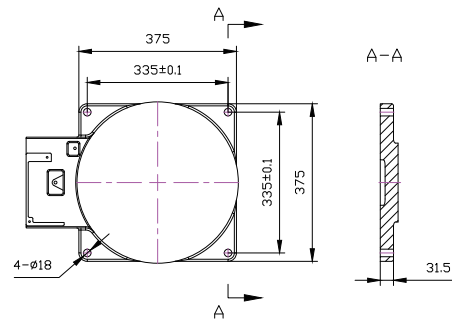
Assembling

Others

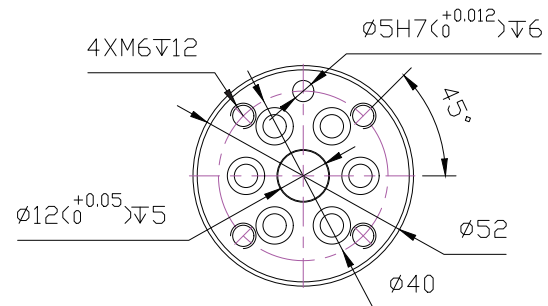
Robot Work Envelope



Robot Base Dimension



Robot Flange Dimension



PRODUCT PARAMETERS

No. Control Axes		6
Max Load Capacity		8
Max. Reach (mm)		2000
Pos.rep(mm)		±0.08
Motion Range (°)	J1 Axis	±160
	J2 Axis	+150/-90
	J3 Axis	+85/-160
	J4 Axis	±180
	J5 Axis	±129
	J6 Axis	±360
Max. Speed* (°/s)	J1 Axis	147
	J2 Axis	101
	J3 Axis	134
	J4 Axis	200
	J5 Axis	250
	J6 Axis	443

Motor Output (kw)	J1 Axis	1.5	
	J2 Axis	2	
	J3 Axis	1.5	
	J4 Axis	0.4	
	J5 Axis	0.2	
	J6 Axis	0.2	
Weight (kg)		≈270	
Installation		Floor, Upside-down, Angle	
Levels of protection		IP54	
Ambient temperature / Humidity / Vibration		Ambient temperature: 0~45℃ Ambient humidity: Normally 75 %RH or less (No dew, nor frost allow) Short term 90 %RH or less (within one month) Vibration acceleration: 4.9 m/s (0.5G) or less	
Electronic Control Box Specification	Power Supply		1/3PH, 200-230VAC, 50Hz/60Hz
	Size	Standard	580mm×460mm×870mm
		Optional	480mm x 500mm x 280mm

C Series 60KG

LA2100-60



PRODUCT CHARACTERISTICS

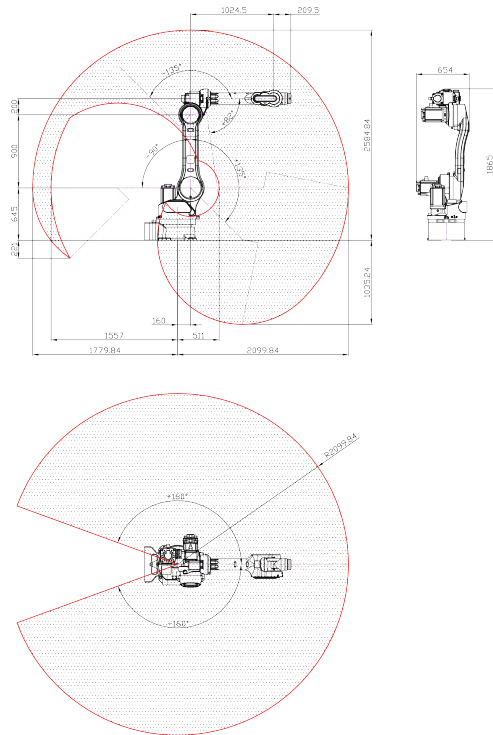
- Suitable for heavy payload, large workpiece with wide range of arm span
- Equipped with 16 I interfaces, 24 O interfaces, 2 DA interfaces and 1 interface, support quick expansion of IO board

MAIN APPLICATIONS

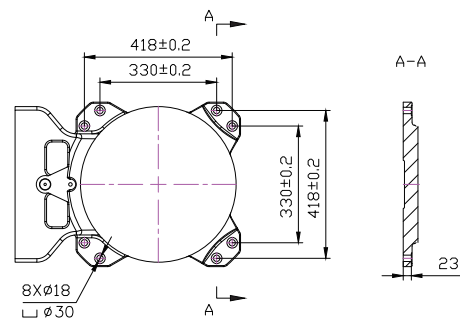
- | | | |
|-------------------|----------|----------|
| Loading/unloading | Handling | Grinding |
| Assembling | Others | |



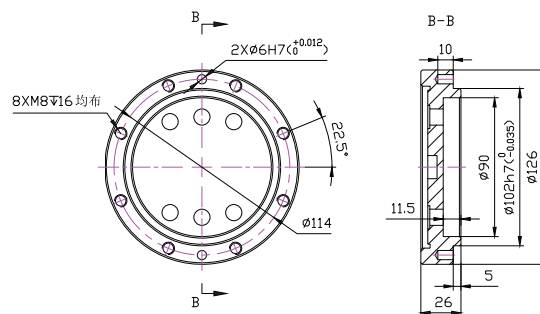
Robot Work Envelope



Robot Base Dimension



Robot Flange Dimension



PRODUCT PARAMETERS

No. Control Axes		6
Max Load Capacity		60
Max. Reach (mm)		2100
Pos.rep(mm)		±0.2
Motion Range (°)	J1 Axis	±160
	J2 Axis	+135/-90
	J3 Axis	+82/-135
	J4 Axis	±180
	J5 Axis	+125/-105
	J6 Axis	±360
Max. Speed* (°/s)	J1 Axis	133
	J2 Axis	105
	J3 Axis	105
	J4 Axis	348
	J5 Axis	198
	J6 Axis	298

Motor Output (kw)	J1 Axis	3
	J2 Axis	5.5
	J3 Axis	3
	J4 Axis	1.5
	J5 Axis	0.75
	J6 Axis	0.75
Weight (kg)		≈ 780
Installation		Floor
Levels of protection		IP54
Ambient temperature / Humidity / Vibration		Ambient temperature: 0~45°C Ambient humidity: Normally 75 %RH or less (No dew, nor frost allow) Short term 90 %RH or less (within one month) Vibration acceleration: 4.9 m/s (0.5G) or less
Electronic Control Box Specification	Power Supply	ThreePhase 380VAC, 50Hz/60Hz
	Size	600mm x 570mm x 970mm

K Series 13KG

LA1460-13



PRODUCT CHARACTERISTICS

- High-speed and high-precision with $\pm 0.03\text{mm}$ position repeatability
- Compact machine and large arm range provide multiple installation methods
- Equipped with 16I/24O, supports quick expansion of IO board
- High IP rating of IP67 protection

MAIN APPLICATIONS

Loading/unloading

Handling

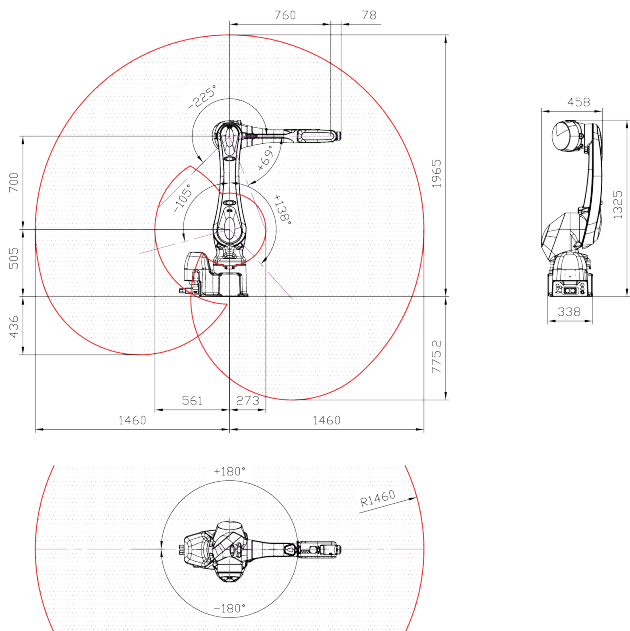
Grinding

Assembling

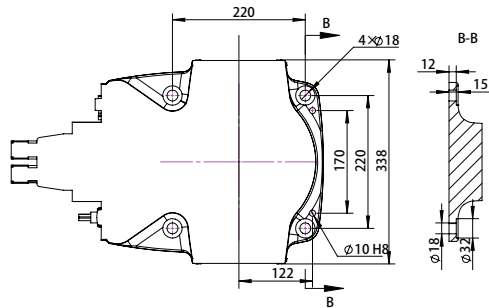
Others



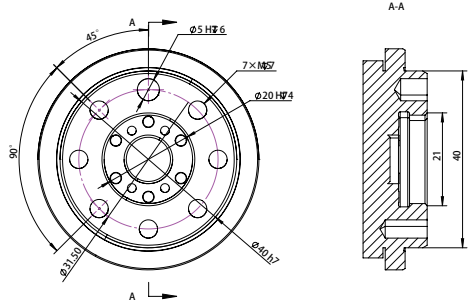
Robot Work Envelope



Robot Base Dimension



Robot Flange Dimension



PRODUCT PARAMETERS

No. Control Axes		6
Max Load Capacity		13
Max. Reach (mm)		1460
Pos.rep(mm)		± 0.03
Motion Range (°)	J1 Axis	± 180
	J2 Axis	$+138/-105$
	J3 Axis	$+69/-225$
	J4 Axis	± 200
	J5 Axis	$+125$
	J6 Axis	± 360
Max. Speed* (°/s)	J1 Axis	265
	J2 Axis	250
	J3 Axis	265
	J4 Axis	475
	J5 Axis	475
	J6 Axis	730

Motor Output (kw)	J1 Axis	1.5
	J2 Axis	1.5
	J3 Axis	0.75
	J4 Axis	0.2
	J5 Axis	0.2
	J6 Axis	0.2
Weight (kg)		≈ 170
Installation		Floor, upside-down
Levels of protection		IP67
Ambient temperature / Humidity / Vibration		Ambient temperature: 0~45°C Ambient humidity: Normally 75 %RH or less (No dew. nor frost allow) Short term 90 %RH or less (within one month) Vibration acceleration: 4.9 m/s (0.5G) or less
Electronic Control Box Specification	Power Supply	1/3PH, 200-230VAC, 50Hz/60Hz
	Size	580mm×460mm×870mm

K Series 20KG

LA1725-20



PRODUCT CHARACTERISTICS

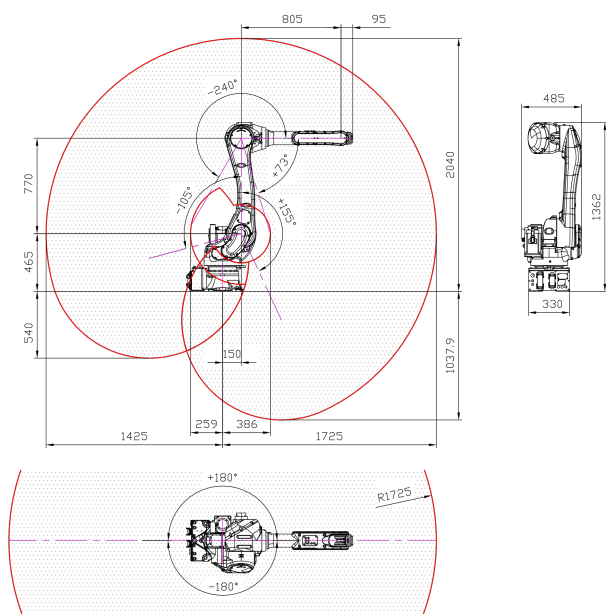
- High-speed and high-precision with $\pm 0.04\text{mm}$ position repeatability
- Compact machine and large arm range provide multiple installation methods
- Equipped with 16I/24O, supports quick expansion of IO board
- Basement IP65 protection with wrist to IP67 high protection

MAIN APPLICATIONS

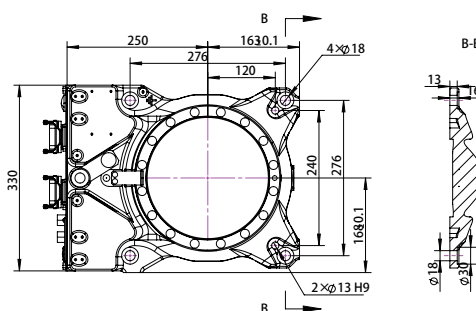
- | | | |
|-------------------|----------|----------|
| Loading/unloading | Handling | Grinding |
| Assembling | Others | |



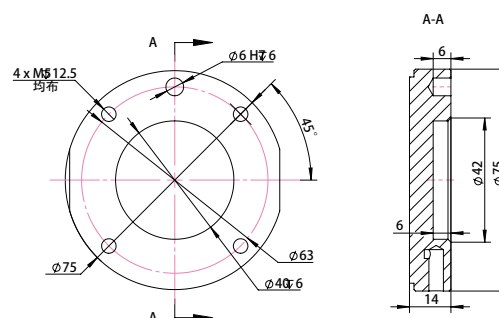
Robot Work Envelope



Robot Base Dimension



Robot Flange Dimension



PRODUCT PARAMETERS

No. Control Axes		6
Max Load Capacity		20
Max. Reach (mm)		1725
Pos.rep(mm)		±0.04
Motion Range (°)	J1 Axis	±180
	J2 Axis	+155/-105
	J3 Axis	+73/-240
	J4 Axis	±270
	J5 Axis	+145
	J6 Axis	±360
Max. Speed* (° /s)	J1 Axis	190
	J2 Axis	205
	J3 Axis	210
	J4 Axis	400
	J5 Axis	360
	J6 Axis	610

Motor Output (kw)	J1 Axis	2
	J2 Axis	2
	J3 Axis	0.675
	J4 Axis	0.2
	J5 Axis	0.2
	J6 Axis	0.2
Weight (kg)		≈230
Installation		Floor, Upside-down
Levels of protection		Wrist part : IP67 Base part : IP65
Ambient temperature / Humidity / Vibration		Ambient temperature: 0~45°C Ambient humidity: Normally 75 %RH or less (No dew, nor frost allow) Short term 90 %RH or less (within one month) Vibration acceleration: 4.9 m/s (0.5G) or less
Electronic Control Box Specification	Power Supply	1/3PH, 200-230VAC, 50Hz/60Hz
	Size	580mm×460mm×870mm

Double-layer trolley robot

LXC100-917Y

LXC11P-1468C



PRODUCT CHARACTERISTICS

- Adopt flexible moving design. The equipment could lock to casters and fixed bracket, so the robot could achieve rapid deployment.
- Equipped with double layer material storehouse controlling button and safety fence could ensure staff safe production.
- Only one Ethernet cable or IO mutual insert connector could achieve equipment and machine communication.
- Only testing communication signal and teaching pick&place point could spare on-site tuning time, which provides rapid production availability.
- Rapidly moving station or changing processing product based on production plan, achieve changeover production demands.
- Add new workpiece processing could achieve continuous production without shutdown the robot and machine.

PRODUCT PARAMETERS

Product type	LXC100-917Y	LXC11P-1468C
Coordinate robot type	LA917-6	LA1468-10
Robot maximum load(kg)	6	10
Robot working radius(mm)	917	1468
Repeat location precision(mm)	±0.03	±0.08
Robot protection level	IP54	IP54
Product size(mm)	1700×600	2400×850
Material tray size(mm)	570×420	800×600
Material tray maximum load(kg)	80	80
Suitable workpiece type	Medium/small type, angle location demand.	Medium/small type, angle location demand.
Suitable workpiece height(mm)	95	135
End effector	Optional	Optional

MAIN APPLICATIONS

Milling machine

Machine center

Lathe

Tapping machine

Others

Rotation trolley robot series

LXC200-917Y**LXC200-1206C**

PRODUCT CHARACTERISTICS

- Adopt flexible moving design. The equipment could lock to caster and fixed bracket, so the robot could achieve rapid deployment.
- Equipped with rotation material storehouse controlling button, surrounded protection fence and three faces openable could ensure staff changeover safety.
- Only one Ethernet cable or IO mutual insert connector could achieve equipment and machine communication.
- Only testing communication signal and teaching pick&place point could spare on-site tuning time, which provides rapid production availability.
- Rapidly tuning material storehouse station size to match different products, achieving changeover production demands.
- Add new workpiece processing could achieve continuous production without shutdown the robot and machine.

PRODUCT PARAMETERS

Product type	LXC200-917Y	LXC200-1206C
Coordinate robot type	LA917-6	LA1206-10
Robot maximum load(kg)	6	10
Robot working radius(mm)	917	1206
Repeat location precision(mm)	±0.03	±0.05
Robot protection level	IP54	IP54
Product size(mm)	2000 X 700	2000 X 700
Matching workpiece size(mm)	Outer circle 25-160	Outer circle 25-160
Material storehouse station amount	8 station	8 station
Material storehouse single station load(kg)	50	50
Single station height(mm)	410	410
Material station transmission	chain transmission	chain transmission
End effector	optional	optional

MAIN APPLICATIONS

Milling

Machine center

Lathe

Tapping machine

Others

The secret of cost reduction and effect increase

Compact modularization design achieves rapid and flexible deployment.

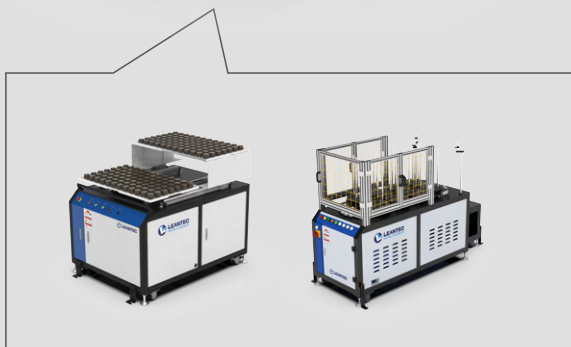



30 minutes

Rapid Deployment

10 minutes

Rapid Changeover



Timing PK 	Deployment	Changeover
LEANTEC Flexible robot cell products	30 mins	10 mins
Traditional robot pick and place	>12 hrs	>3 hrs

Optional multiple material storehouse modules could match different workpiece and equipment.

One CNC - One Robot integration smart production



One robot to two CNC machines make productivity double



Labor cost comparison

Usual labor production

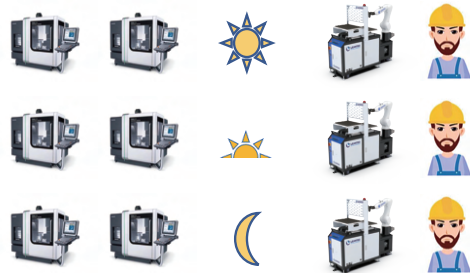
6 CNC machines,
3 classes, and 9 people



labor cost: **about 150,000 USD/one year.**

Input LEANTEC
Flexible robot cell

6 CNC machines,
3 classes, and 3 people

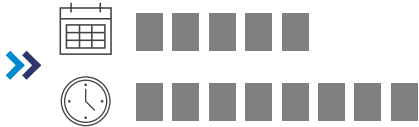


labor cost: **about 50,000 USD/one year.**

Activation battle

Common labor production

5 days, 8 hours per day



Input LEANTEC
Flexible robot cell production

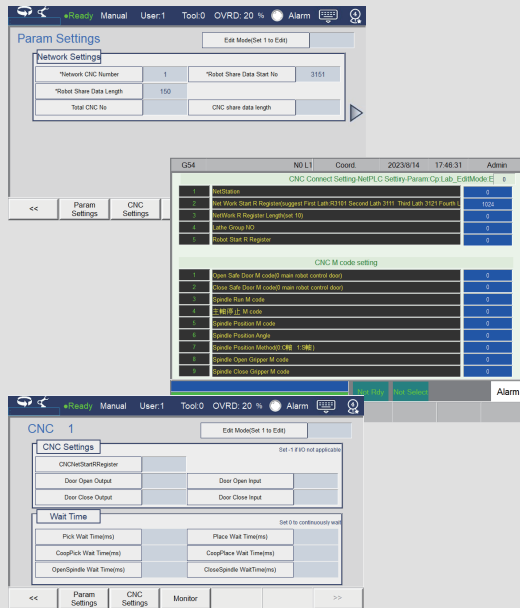
7 days, 24 hours per day



ROBOT APPLICATIONS

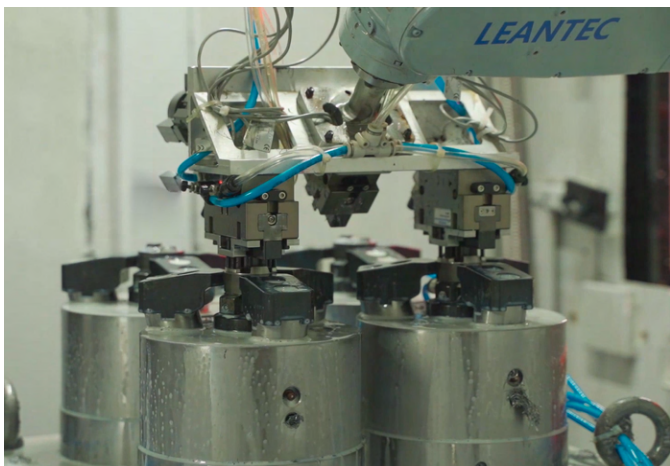
Lathe & machining pick and place

CNC rapid connection processing package



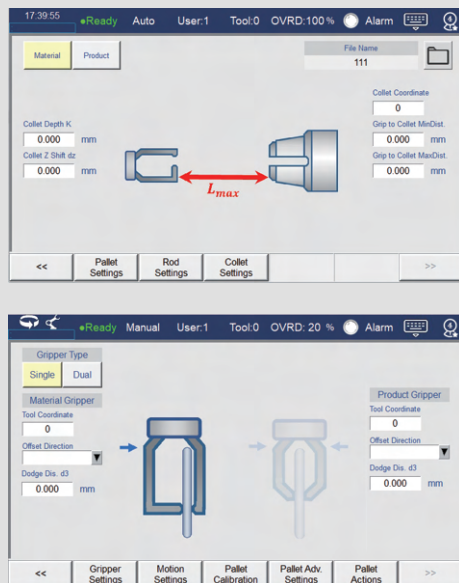
Solution advantage :

- Rapid communication : network connection. Be online by parameter setting
- Wiring reduction : Reduce entity wire usage. Spare cost and easy problem inspection.
- Rapid start : standard packaged software reduces the tuning threshold.
- Easy maintenance : Standardize the process for easy teaching and maintaining



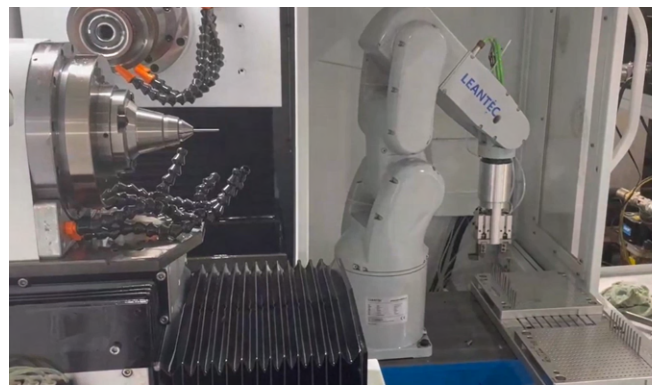
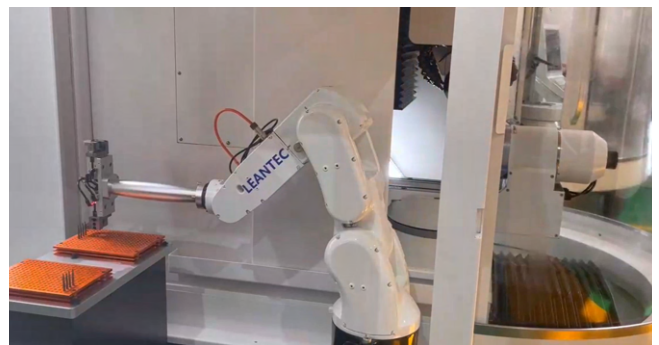
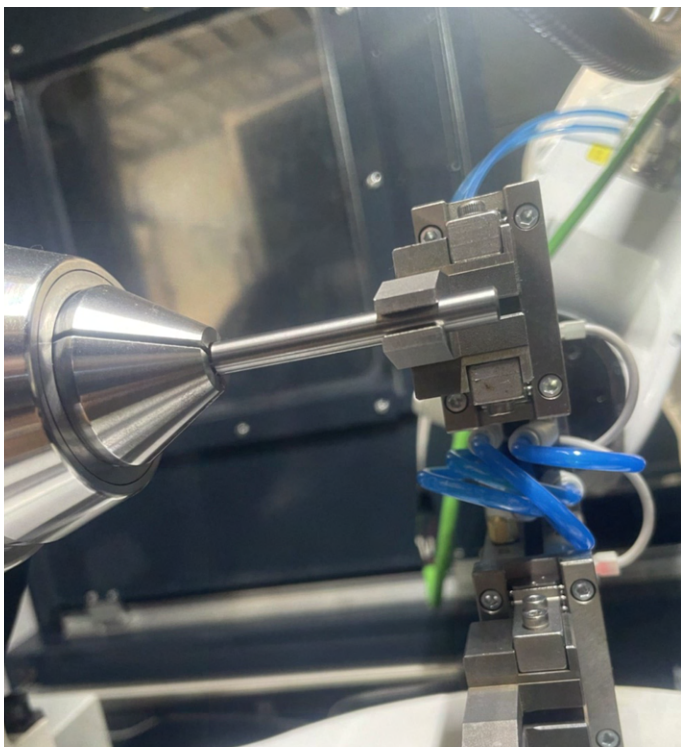
Tool grinder pick and place

Grinder pick and place processing package



Solution advantage :

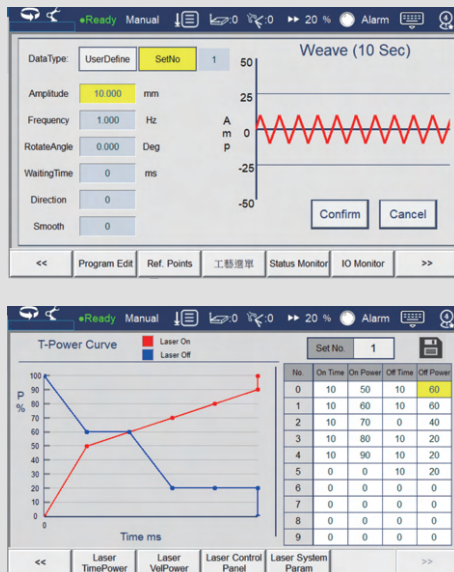
- Rapid communication : Easy align the pick and place position of the clamp end, and change the parameters by parameterizing the clamp.
- Support multi-segment discharge and multi-segment pickup to avoid jamming.
- Compatible gripper : The pick and place on the tray is parameterization. It is compatible to single open/double open gripper.
- Reduction of calibration points: one debugging instruction, no need for point correction after changing the material tray
- Multi-scene adaptation: free setting of material pick-up direction and avoidance distance to meet various usage scenarios.



ROBOT APPLICATIONS

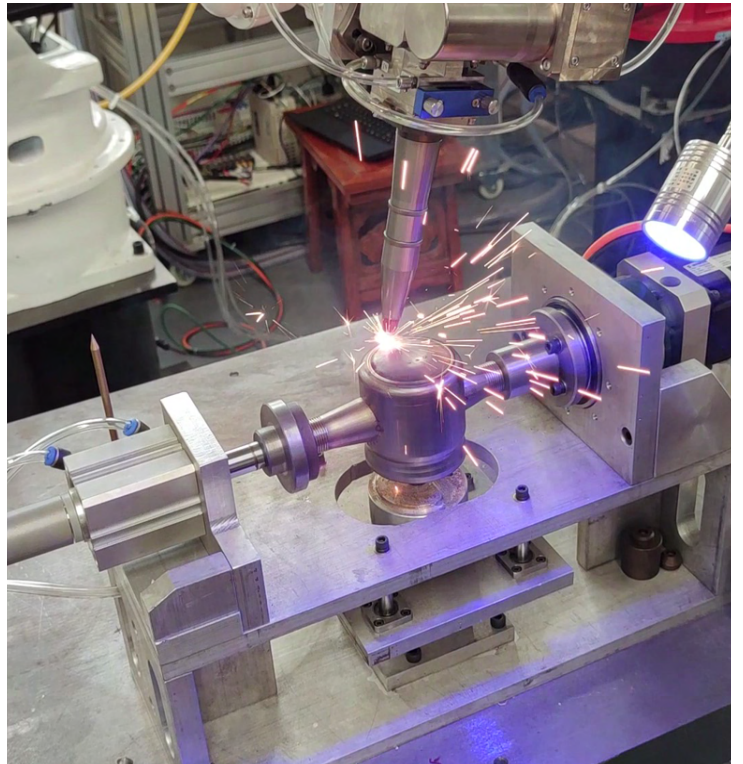
Robot Welding

Electrical welding and lazer welding process packages



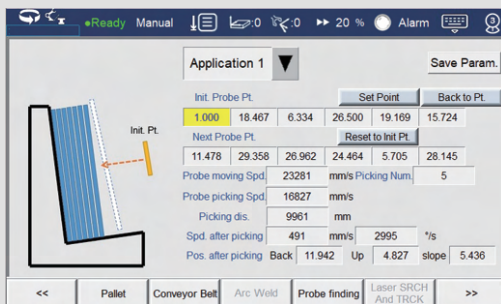
Solution advantage :

- Complete Process: complete welding command, including weaving, intermittent welding to meet different processing demands.
- Fast tuning: The process supports document preservation for its tuning and inheriting.
- Special process: Support time power and speed laser function, precise control.
- Open and close the light power to avoid over-soldering problems.



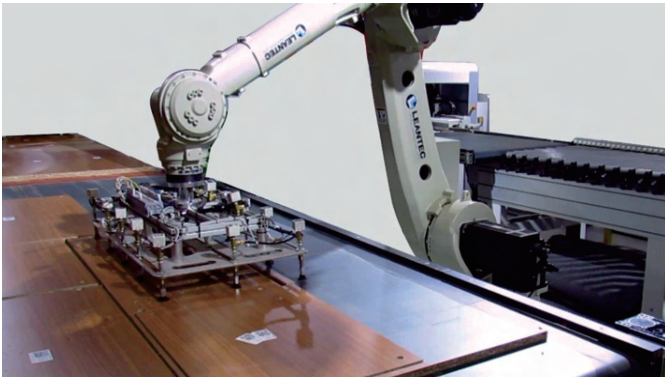
Woodworking & Glass Industry Pick and Place

Material pick and place process package



Solution advantage :

- **Complete Process:** The process including: Exploring and gather materials. Seek edge deposit.
- **Fast tuning:** The process document could be preserved based on group number for process tuning and copying.
- **Reduce calibration:** Change material storehouse without re-calibrate. Different size material only needs a little tutor.
- **Multiple work piece adjusting:** Meet different size type processing requirements.



ROBOT APPLICATIONS

Flexible robot cell pick and place solution

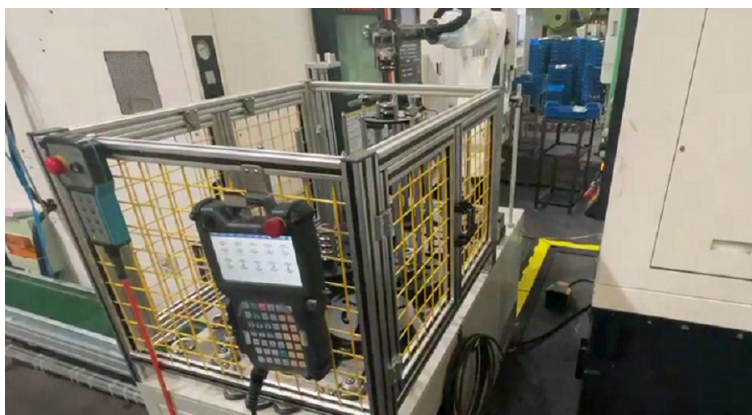
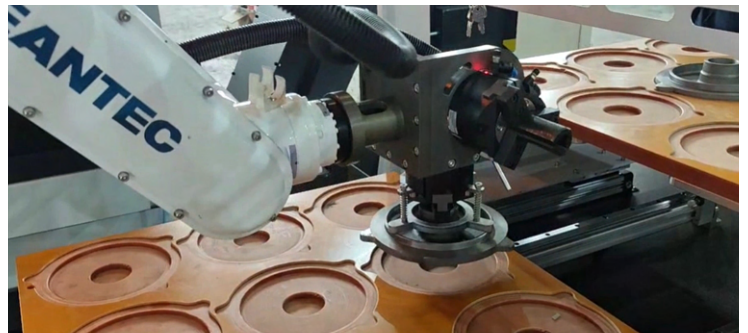
Solution Description

Suitable case: mechanical processing industry machine upper/down material application.

Automatic element: articulated robot, automatic storehouse, end side actuator, reverse mechanism, remote tool conversations, the cloud monitor, etc.

Solution advantage:

- Rapid deployment: The trolley product adopts flexible moving design and equipped with caster and fixed bracket, achieving the rapid deployment.
- Rapid communication: Only one cable or IO mutual insert connector could achieve communication between equipment and machine.
- Non-shutdown production: Process new workpiece without shutdown the robot and machine, achieving non-shutdown production.
- Software function: Equipped with torsion limit function. Provide fast connection processing package or remote tool compensation function for SYNTEC machine system.



No electrical cabinet solution

Solution Description

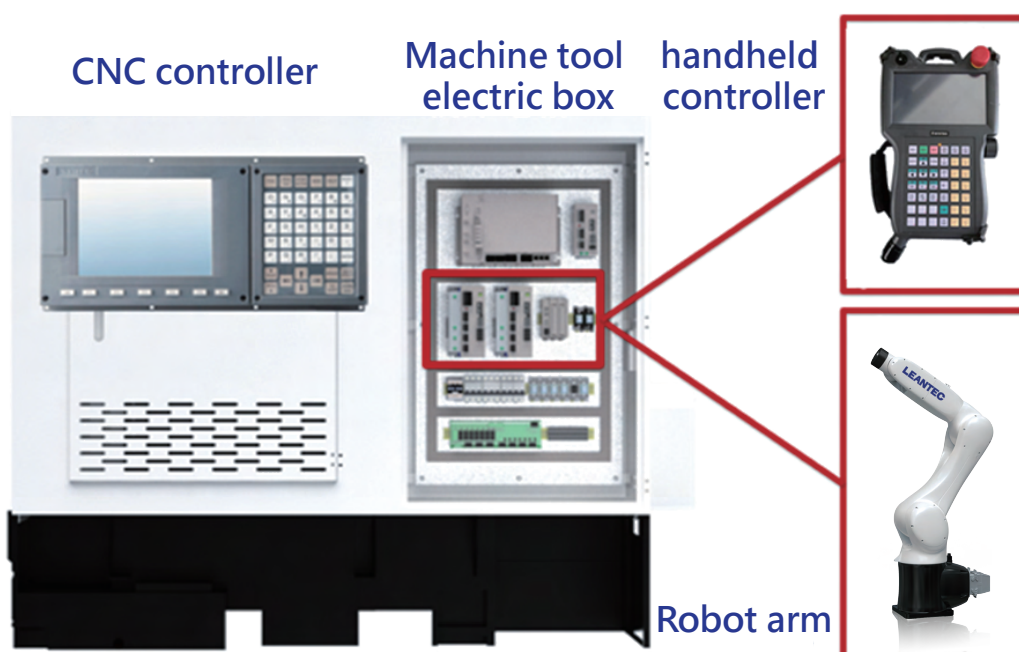
Adaption type:

Y series: LS400-3N、LS600-4N、LS900-10N、LA917-6N;

R series: LA596-4N、LA707-7N、LA906-7N、LA1206-10N;

Solution advantage:

- Wide range: Multiple arms with wide cover of arm expansion, meet the personalized needs.
- Cost reduction: Spare the arm cabinet metal plate and part electrical components, reducing purchase and maintain cost.
- Simple structure: Standard equipped with a robot arm and robot arm electronic controller is merged into machine electrical box. The body would be installed in advance.
- Complete service system: Complete customer service system. One station service and resolve, reduce the customer entry threshold.



ROBOT CONTROLLER



Teaching Pendant controller

Item	Specifications
Displayed language	CHT/CHS/English(E) 7kg
Number of axes	Standard configuration of 4 axes (expandable up to 12 axes).
Operation method	Touchscreen, Button Operation.
Ram	4GB, Unlimited Number of Programs
Servo communication	M3 Bus, EtherCAT Bus.
External interface	USB*1

Item	Specification
Operation buttons	Operator Panel, Emergency Stop, Mode Selector Switch, Safety Switch, MPG.
Cable Length	10M/ 17M
Protection Level	IP65
Ambient temperature	10°C~50°C
Environmental humidity	-20%~90%, No Condensation
Physical Dimensions	340x207x78mm

FC-DI/DO/LWM

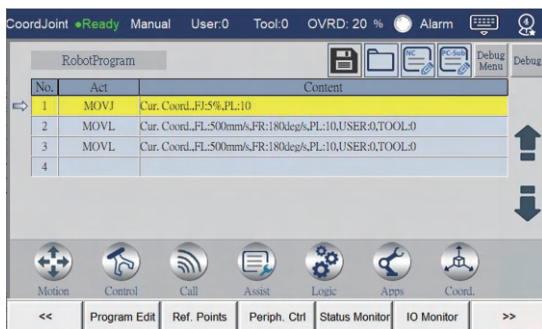
Item	Specification (DI)	Specification (DO)	Specification (FC-LWM)
Material code	F31-FC_16IN_PHO	F31-FC_16OUT_T16	F31-FC-LWM
Signal type	Choose one from NPN and PNP	PNP	Choose one from NPN and PNP
COM port/power signal	DC24V: NPN, DC0V: PNP	DC24V, DC0V	
Interface specifications	16-channel input signal	16-channel output signal with the output voltage of 24 V.	1PWM\1AD\2DA 16ways input signal,(NPN,PNC could adjust) 8 ways output signal, output 24V
Installation method	Buckle	Buckle	Buckle
Ambient temperature	-10°C~50°C	-10°C~50°C	-10°C~50°C
Ambient humidity	20%~90%, no condensation	20%~90%, no condensation	20%~90%, no condensation
Physical Dimensions	120x27x105mm	120x27x105mm	120x27x105mm
Single point current		Maximum output current 0.5A	Maximum output current 0.5A



SYSTEM FUNCTIONS

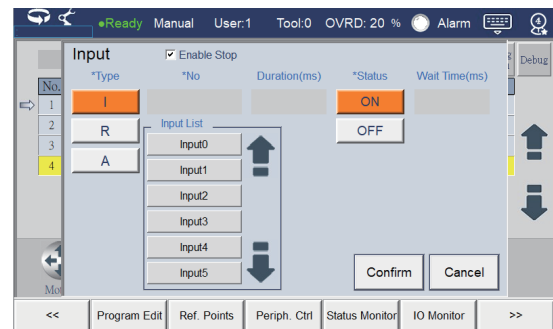
Intuitive Operation and Programming

Conversational programming, no need to learn robot languages



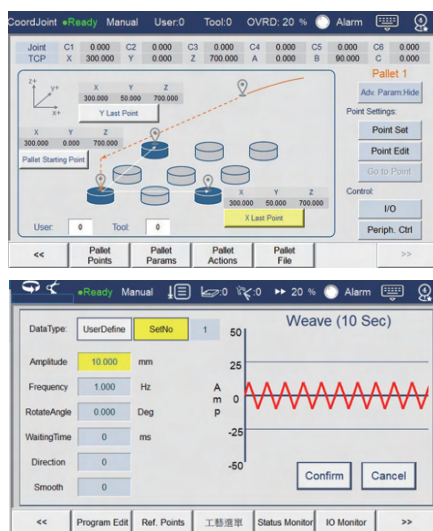
Sufficient IO commands

- Provide complete IO commands without writing any PLC on your own.
- Wait for Point I without deceleration, and output Point O during movement, which can improve the operating efficiency of the machine.



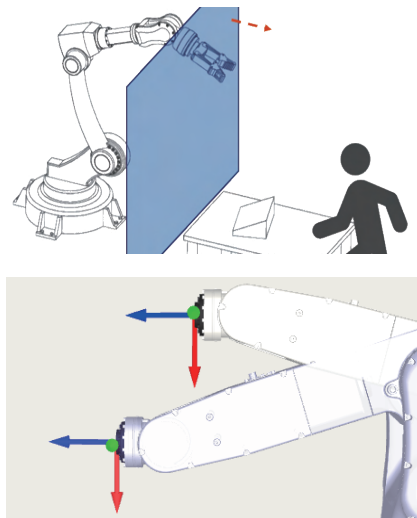
Quickly introduce it to practical applications

- Provide the batching tray and track tracking and workstation reservation functions
- Provide various process packages, such as welding, picking and placing, etc
- Record important points according to reference points and reuse them in the program



Easy advanced programming function

- The anti-collision area function can prevent the arm from entering a specific area to increase safety
- The dynamic anti-collision function can prevent the arm from colliding during movement
- Able to automatically pass the singular point without writing any bypassing program on your own



LEANTEC CLOUD PRODUCT

Workshop management



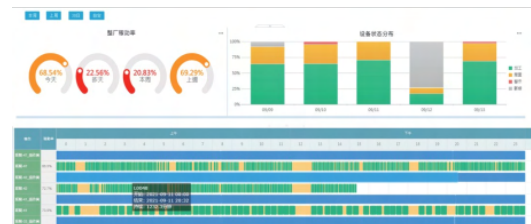
- Real time monitor of equipment status



- Single machine feed rate, utilization, productivity at a glance



- Single machine information could be more transparent



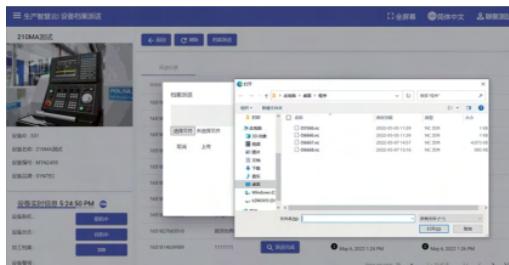
- Check the efficiency of equipments at any time

Processing record form



- The number of jobs reported can also be presented on the board by filtering the criteria.

Document delivery



- Working process could deliver to controller online



Abnormal notification



- The abnormal information is alerted to the responsible personnel in time to prevent the machine from prolonged alarm and delay production.

Workshop huge screen



- Multiple large-screen kiosks are presented in rotation to visualize the data in workshop.

VISUAL SOLUTION

Product Characteristics

- Support Modbus-Tcp, EtherNet/IP communication could work with several market available visual camera use
- Support SYNTEC visual and market sell Hikvision, Congnex visual solution.
- Through R value/IO/programming to do start action.
- It could connected to IP CAM and displayed on the controller to meet monitoring requirements.



MEASURING & TESTING SOLUTION

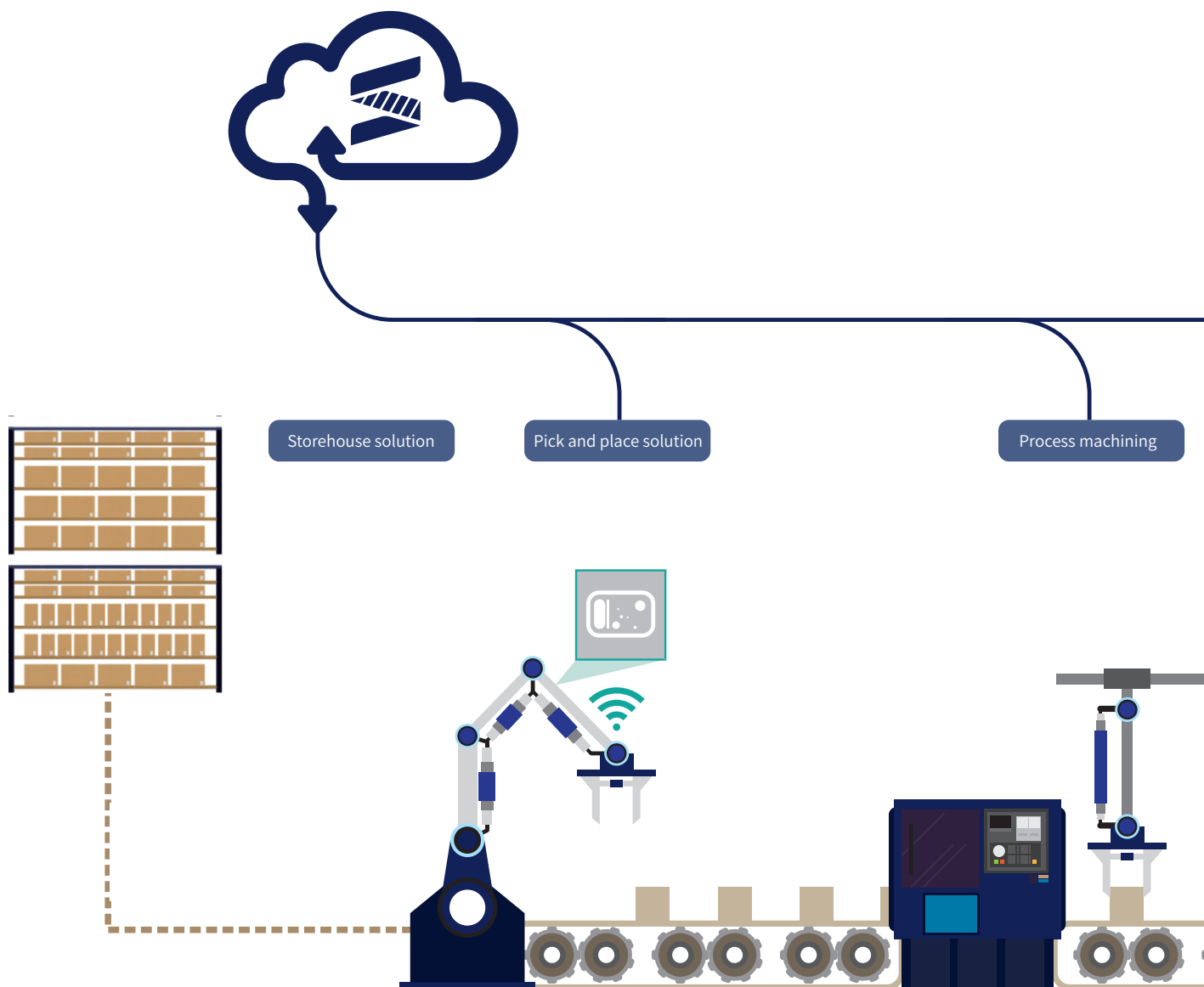
Product Characteristics

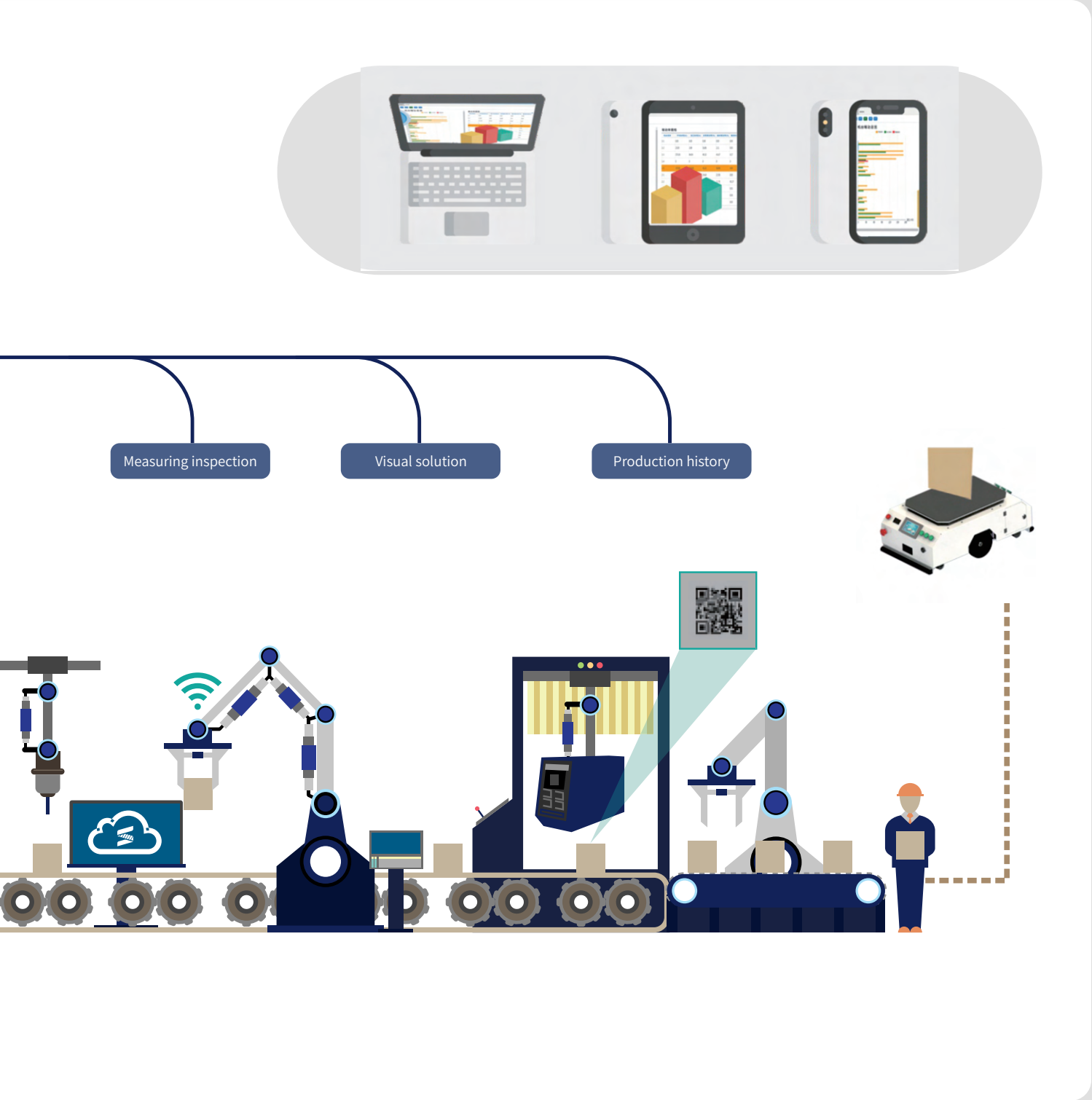
- Support multiple-axis synchronous motion for larger measurement range.
- Easy setup for common industrial communications (MODBUS-TCP, EtherNet/IP, etc.)
- Simple integration with other commercial vision systems
- Generate measurement log for long-term monitoring
- Upload data through the Internet in real time for tool compensation and remote monitoring



INTELLIGENT FACTORY

Intelligent Factory





TAIWAN

Taiwan (Hsinchu)

SYNTEC Technology Co., Ltd
ADD : No.25, Yanfa 2nd Rd., East Dist.,
Hsinchu City 300, Taiwan (R.O.C.)
TEL : +886-3-6663553
FAX : +886-3-6663505
EMAIL : sales@syntecclub.com.tw

Taichung

SUN-CNC Co., Ltd
ADD : No. 22, Lane 428, Section 1, Fengyuan
Boulevard, Fengyuan District
TEL : +886-4-2537731
TAX : +886-4-25349224

TANLU-CNC Co., Ltd

ADD : No. 42, Jingming Road, Xitun District,
Taichung City, Taiwan (R.O.C.)
TEL : +886-4-23102626
TAX : +886-4-23102636

Tainan

ADD : No. 218, Denan Road, Rende District,
Tainan City, Taiwan (R.O.C.)
TEL : +886-6-2796707
TAX : +886-6-2796705

AROUND THE WORLD

Malaysia

ADD : No.2, Jalan Astana 1D, Bandar Bukit Raja, 41050
Klang, Selangor, Malaysia.
TEL : +603-33115887
EMAIL : sales.malaysia@syntecclub.com

Thailand

ADD : 78/38 Kheha Romklao Rd., Khlong Song Ton Nun,
Lat Krabang, Bangkok, 10520
TEL : +662-006-5738
EMAIL : thanawat@syntecclub.com.th

Vietnam

ADD : 3F, No. 36, A4 Street, Ward 12, Tan Binh District,
Ho Chi Minh City, VietNam
TEL : +84938332829
FAX : +842822535556
EMAIL : andyngo@vnsyntec.com.vn

Turkey

ADD : Kücükbakkalkoy Mah. Vedat Günyol Cd. Defne Sok.
No:1 D:1502 Flora Residence,34750 Atasehir/Istanbul, Türkiye
TEL : +90-216-2662475
EMAIL : daisy.cheng@syntecclub.com.tw

USA (South California)

ADD : 2841 Saturn St, #D, Brea, CA 92821
TEL : +1909-551-0187
EMAIL : info@syntecamerica.com

Indonesia

PT. OTOMASI BERSAMA INDONESIA
ADD : Ruko Arcadia Mataram Blok B, No 15, Kelurahan
Cibatu, Kecamatan Cikarang selatan, 17530, Indonesia
TEL : +6221 2210 4832
EMAIL : yulius@otomasi.co

India (Distributor)

Luna Technologies Pvt. Ltd.
ADD : W-200, TTC Industrial Estate , Kharime ,
Thane Belapur Road , Navi Mumbai -400708
TEL : +91-22- 61786110
E-mail : sales@lunabearings.com

CHINA

Jiangsu

SYNTEC TECHNOLOGY(Suzhou)CO.,Ltd
ADD : Building B, No.9 Chunhui Road,Suzou Industrial
Park,China
TEL : 0512-69008860
FAX : 0512-65246029

**SYNTEC TECHNOLOGY(Suzhou)CO.,Ltd WuXi
Office**

ADD : B906, Yuye Network Building, 68 Exploration
Road, Huishan District, Wuxi City, Jiangsu Province,
China
TEL : 15295664580

**SYNTEC TECHNOLOGY(Suzhou)CO.,Ltd
Changzhou Office**

ADD : Room 2217, Yatai Fortune Center, No. 1
Huayuan Street, Hutang Town, Wujin District,
Changzhou City, Jiangsu Province, China
TEL : 18168828572

**SYNTEC TECHNOLOGY(Suzhou)CO.,Ltd
XuZhou Branch**

ADD : Room 1503, South of Territorial Sea Office
Building, No. 66, Kunpeng Road, Xuzhou Economic
Development Zone, Jiangsu Province, China
TEL : 13656201020

**SYNTEC TECHNOLOGY(Suzhou)CO.,Ltd
NanJing Branch**

ADD : Room 712, Research Building 1, Lianggang
Park, 117 Suyuan Avenue, Jiangning District, Nanjing
City, Jiangsu Province, China
TEL : 025-52717702
FAX : 025-52717710

**SYNTEC TECHNOLOGY(Suzhou)CO.,Ltd
NanTong Branch**

ADD : Room T3-1301, No. 108, Gangzha District,
North Street, Nantong City, Jiangsu Province, China
TEL : 0513-89077025
FAX : 0513-89072057

**SYNTEC TECHNOLOGY(Suzhou)CO.,Ltd
NanTong Branch Yanchen Office**

ADD : Room 401, building 13, phase 9, Zhongnan
Century City, Yandu District, Yancheng City, Jiangsu
Province
TEL : 18625235150

Shaanxi

**SYNTEC TECHNOLOGY(Suzhou)CO.,Ltd XiAn
Branch**

ADD : Room 1_1328, Building 4, Yicui Garden I
Duhui, No. 10, South Tangyan Road, Xi'an
High-tech Zone
TEL : 029-88287423

**SYNTEC TECHNOLOGY(Suzhou)CO.,Ltd BaoJi
Office**

ADD : Room 1702, Unit 3, Building 8, Dongling Xinhui,
Binhe North Road, Jintai District, Baoji, Shaanxi
Province, China

Guangdong

**SYNTEC TECHNOLOGY(Suzhou)CO.,Ltd GuangDong
Branch**

ADD : Factory 201or 301, Building A, No.10 Nanjiang
Third Road, Zhuijiang Street, Nansha District, Guangzhou
City
TEL : 020-39089367
FAX : 020-39089791

**SYNTEC TECHNOLOGY(Suzhou)CO.,Ltd DongGuan
Branch**

ADD : 0769-816611ing 1, Mobile Group, No. 522, Zhen
'an East Road, Chang'an Town, Dongguan City,
Guangdong Province, China
TEL : 0769-81660318

**SYNTEC TECHNOLOGY(Suzhou)CO.,Ltd GuangZhou
Branch**

ADD : Room 404, Building 2, Seven Friendship Building,
No. 8 Luojiacon Section, Fuyi Road, Dalong Street,
Panyu District, Guangzhou City, Guangdong Province
TEL : 020-34583040
FAX : 020-34583220

**SYNTEC TECHNOLOGY(Suzhou)CO.,Ltd ChangPing
Branch**

ADD : Floor 5, Huilong Building, No. 8, Zhanqian 1st
Road, Banshi Village, Changping Town, Dongguan City,
Guangdong Province, China
TEL : 0769-82826802
FAX : 0769-82826820

**SYNTEC TECHNOLOGY(Suzhou)CO.,Ltd ShenZhen
Branch**

ADD : 406, Block E, Haowei new material industrial
park, No. 8, Qinglan 1st Road, Zhukeng community,
Longtian street, Pingshan District, Shenzhen,
Guangdong
TEL : 0755-84320380
FAX : 0755-84559490

**SYNTEC TECHNOLOGY(Suzhou)CO.,Ltd JiangMen
Branch**

ADD : Room 02, 7th Floor, Torch Building, Hi-Tech
Zone, 288 Jinou Road, Jianghai District, Jiangmen City,
Guangdong Province · China
TEL : 0750-3762143

Henan

**SYNTEC TECHNOLOGY(Suzhou)CO.,Ltd LuoYang
Branch**

ADD : Room 704, Runsheng Building, Intersection of
Heluo Road and Sanshan Road, Hi-Tech Zone, Luoyang,
Henan Province, China
TEL : 0379-65110352
FAX : 0379-65110352

**SYNTEC TECHNOLOGY(Suzhou)CO.,Ltd
ShiJiaZhuang Office**

ADD : 4-3-801, Reyli Community, No. 8 Huaxing Road,
Qiaoxi District, ShiJiaZhuang City, Hebei Province, China
TEL : 18622728669
FAX : 0379-65110352

Fujian

**SYNTEC TECHNOLOGY(Suzhou)CO.,Ltd XiaMen
Branch**

ADD : Floor 3, No. 2, Jixiang West Road, Xinmin Town,
Tong'an District, Xiamen City, Fujian Province
TEL : 0592-7191901
FAX : 0592-7220536

Zhejiang

**SYNTEC TECHNOLOGY(Suzhou)CO.,Ltd HangZhou
Branch**

ADD : 1202, Unit 2, Building 1, Dikai Building, No.471
Jincheng Road, Xiaoshan District, Hangzhou City,
Zhejiang Province, China
TEL : 0571-82751187

**SYNTEC TECHNOLOGY(Suzhou)CO.,Ltd HangZhou
Branch Jinhua Office**

ADD : Room G204, No. 1729, Dongshi North Street,
Xinshi street, Wucheng District, Jinhua City, Zhejiang
Province
TEL : 1599-0026533

SYNTEC TECHNOLOGY(Suzhou)CO.,Ltd WenZhou

ADD : Room 1207, Ivy league Building, No.262, Lane
416, Zhaochui Road, Jiangdong District, Ningbo City,
Zhejiang Province, China
TEL : 0577-86158619

**SYNTEC TECHNOLOGY(Suzhou)CO.,Ltd NingBo
Branch**

ADD : Room 1207, Ivy league Building, No.262, Lane
416, Zhaochui Road, Jiangdong District, Ningbo City,
Zhejiang Province, China
TEL : 0574-87750305

**SYNTEC TECHNOLOGY(Suzhou)CO.,Ltd WenLing
Branch**

ADD : Room 509, Haocheng Service Building, No. 838,
Wanchang Middle Road, Chengdong Street, Wenling
City, Taizhou City, Zhejiang Province, China
TEL : 0576-86138372
FAX : 0576-86119106

**SYNTEC TECHNOLOGY(Suzhou)CO.,Ltd YuHuan
Office**

ADD : Room 302, Unit 2, Building 1, Hualong Times
Square, 226 Provincial Road, Chunmen Town, Yuhuan
County, Taizhou City, Zhejiang Province, China
TEL : 13088636567

Chongqing

**SYNTEC TECHNOLOGY(Suzhou)CO.,Ltd ChongQing
Branch**

ADD : 1007, Building 4, No.62, East Section of Taishan
Avenue, Yubei District, Chongqing
TEL : 023-67913296
FAX : 023-67634382

**SYNTEC TECHNOLOGY(Suzhou)CO.,Ltd ChengDu
Office**

ADD : ADD : Room102, Unit 1, Building 24, Jiazhaoeye
Modern City, No.898, Section 2, Xingxing Road,
Dongsheng Street, Shuangliu District, Chengdu City,
Sichuan Province, China
TEL : 18302866229

Tianjin

**SYNTEC TECHNOLOGY(Suzhou)CO.,Ltd TianJin
Branch**

ADD : No.37, Area A, Qiao Ruifeng Garden, No.7
Waihuan West Road, Xiqing District, Tianjin, China
TEL : 022-23739192

Shandong

**SYNTEC TECHNOLOGY(Suzhou)CO.,Ltd JINan
Branch**

ADD : 502, Unit 3, Building 11, Luneng Kangqiao, No.
28, Sankongqiao Street, Tianqiao District, Jinan,
Shandong
TEL : 0531-85807208
FAX : 0531-85905708

**SYNTEC TECHNOLOGY(Suzhou)CO.,Ltd QingDao
Office**

ADD : Room 1004, Unit 2, Building 14, Jinri Zidu,
Tianshan Road, Chengyang District, Qingdao,
Shandong
TEL : 18663779803

**SYNTEC TECHNOLOGY(Suzhou)CO.,Ltd TengZhou
Office**

ADD : 13 households, row 1, Xiaokang village, Yucai
Road community, Beixin street, Tengzhou City,
Shandong Province
TEL : 15098706233

Hubei

**SYNTEC TECHNOLOGY(Suzhou)CO.,Ltd WuHan
Branch**

ADD : 2003-2006, Building A, Optics Valley
International, Jiayuan Road, No.456 East Luoyu Road,
Hongshan District, Wuhan City, Hubei Province, China
TEL : 027-87638876
FAX : 027-87204137

Liaoning

**SYNTEC TECHNOLOGY(Suzhou)CO.,Ltd ShenYang
Branch**

ADD : Room 1212, Tianxin Building, 17 Jianshe West
Road, Tiexi District, Shenyang City, Liaoning Province,
China, China
TEL : 18698806526

Anhui

**SYNTEC TECHNOLOGY(Suzhou)CO.,Ltd ShenYang
Branch**

ADD : Room 1005, block B, Wanda Ginza, rongchuang
Mao, Binhu, Hefei, Anhui Province, China.
TEL : 0551-63814183
FAX : 0551-63814183

LEANTEC Intelligence CO., LTD.

No.25, Yanfa 2nd Rd., East Dist.,
Hsinchu City 300, Taiwan

☎ 886-3-6663553

☎ 886-3-6663505

✉ sales@syntecclub.com.tw

2F., No.2, Jingke 3rd Rd.,
Nantun Dist.,Taichung City 408

☎ 886-4-23550621

☎ 886-4-23550621

✉ sales@leantec.com.tw

Suzhou LEANTEC Intelligence Co., Ltd.

Building B, No.9 Chunhui Road,Suzou
Industrial Park,China

☎ 86-512-69008860

☎ 86-512-65246029

✉ service@syntecclub.com.cn



<https://www.leantec.com.tw/default.aspx>

Specifications and external appearance are subject to change without notice.

Copyright © 2012 LEATEC Inc. All rights reserved
Catalog Number : 202308-V1